

# Washington DC Section

Newsletter  
May 2008



**Editor:** Geoffrey Smith  
202-404-6324  
geoffrey.smith@nrl.navy.mil

<http://www.isr.umd.edu/~jwh2/asme/>

**Executive Secretary:** Andrea Gironda  
703-489-9503  
agironda@verizon.net

## **Chairman**

I. Eronimi  
443-885-3868  
eronini@eng.morgan.edu

## **Vice-Chairman**

Rattan Tawney  
301-228-8820  
rtawney@bechtel.com

## **Treasurer**

Boris Ciorneiu  
703-444-9099  
ciorneiu@netzero.com

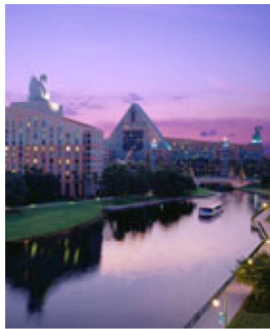
## **Secretary**

Mohsen Mosleh  
202-806-6622  
mmosleh@howard.edu

## **Executive Advisor**

Gurmukh D. Mehta  
703-414-3882  
gurmukh.d.mehta@saic.com

## **PREPARE FOR TOMORROW'S ENGINEERING CHALLENGES - TODAY!**



ASME's **2008 Annual Meeting**, to be held June 7-11, 2008 at the *Walt Disney World Swan and Dolphin Resort* in Lake Buena Vista, Florida, will bring together senior level executives and engineers representing some of the world's top organizations, including IBM, Westinghouse Electric and Boeing – and even the White House – to present their views and perspectives on how emerging business challenges and technological complexities are forcing engineers to adopt new management strategies -- including interdisciplinary collaborations -- to remain competitive.

Numerous plenary sessions, workshops and professional development opportunities including a Career Expo represent an unmatched opportunity to build knowledge, gain practical skills and advance your career.

Learn more about the 2008 ASME Annual Meeting and register today at  
[www.asmeconferences.org/annualmeeting08/index.cfm?channel=secnews&issue=may08](http://www.asmeconferences.org/annualmeeting08/index.cfm?channel=secnews&issue=may08)

## **MESSAGE FROM THE CHAIR**

The ASME Washington Fellows dinner meeting on March 25, 2008, went very well. We are grateful to George Borlase, Dan Deckler, and Philip Grossweiler, who gave interesting accounts and facilitated the lively discussion of their activities as ASME Washington fellows at the White House and Congress. We thank director Robert Hershey for again organizing this event. We also commend director Howard Berkof for the successful career panel he organized (March 26th) at Howard University. This was a joint event with the Howard University ASME student section.

The section's awards banquet held on May 01, 2008, was equally successful (see report on the banquet in this newsletter). Recognized at this event, were the recipients of the 2008 ASME Washington DC Section Scholarship Awards from five area universities, and the first- and second-place award recipients from the five Regional Science Fairs in which ASME Washington DC Section participated by providing special awards judging in the engineering category. The dinner was an opportunity to meet some of these award recipients (and their parents/guardians) and to learn of their projects.

### **Congratulations to Team #1900!**

The Theodore Roosevelt High School, Washington DC, FIRST Robotics Team, which was supported this year by our section, and director Rafael Mandujano was one of the team mentors, had a great showing at the Chesapeake Regional held during the second weekend of March 2008; reaching its highest ranking ever. We say bravo to the team and its mentors and supporters for their accomplishment!

*~ continued on page 2 ~*



ASME 5K Walk for EWB  
Sunday, June 8, 2008  
Walt Disney Swan and Dolphin Resort  
Orlando, FL

Grab those sneakers and a bottle of water and get moving for a great cause! ASME, in conjunction with the 2008 ASME Annual Meeting, is holding a 5K Walk for Engineers Without Borders (EWB), a non-profit humanitarian organization established to partner with developing communities worldwide in order to improve their quality of life. Specifically, this partnership involves the implementation of sustainable engineering projects, while involving and training internationally responsible engineers and engineering students.

A great way to start off your day, this 5K course takes you on a scenic route around the beautiful EPCOT® Resorts area, comprised of the Walt Disney Swan and Dolphin Resort, the Boardwalk Resort, and Disney's Yacht and Beach Club. For walkers who desire a brisk but shorter workout, a 3K course offers an alternate route, with breath taking views.

There is a \$50 fee to participate, with net proceeds donated to Engineers Without Borders. For full details and to register, go to <http://www.asmeconferences.org/annualmeeting08/index.cfm> For more information on EWB, please visit <http://www.ewb-usa.org/>

### **ASME PeerLink<sup>SM</sup> Expands Networking and Collaboration Opportunities for Engineers**

Responding to the growing need of engineers and other technical professionals to connect and exchange information, ASME has launched its new communities of practice ASME PeerLink.

ASME PeerLink now offers new features designed to enhance your experience connecting, collaborating and networking with your peers. ASME PeerLink helps broaden communication capabilities through blogging, interactive whiteboards, document collaboration and real time chat.

To learn more and register, go to <http://peerlink.asme.org>.

# LEARN MORE, EARN MORE IT'S THAT SIMPLE!

- Is your job market becoming saturated?
- Do you need a promotion or raise?
- Do you see career growth in what you are doing now?
- Are you the only engineer in your company without an advanced degree?
- Would you be marketable in a job search?

#### Program Options

Aerospace Engineering  
Chemical Engineering  
Civil & Environmental Engineering  
Electrical & Computer Engineering  
Energetic Concepts  
Environmental Engineering  
Fire Protection Engineering  
Materials Science & Engineering  
Mechanical Engineering  
Nuclear Engineering  
Project Management  
Reliability Engineering  
Software Engineering  
Systems Engineering

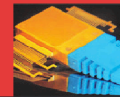
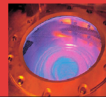
The A. James Clark School of Engineering is the highest-ranked engineering graduate school in the region and ranked No. 16 in the nation by *U.S. News & World Report*. With those credentials, it's the perfect choice for advancing your career and keeping you current with the latest technological developments in your field or in transferring to a new area of expertise.

Master of Engineering (30-credits)  
Graduate Certificate in Engineering (12-credits)  
Custom Short Courses, Workshops, License Reviews

Apply Today: NO GRE EXAMS  
NO THESIS TO COMPLETE DEGREE  
NO QUALIFYING EXAMS  
CLASSES OFFERED TO ACCOMMODATE  
THE WORKING PROFESSIONAL

Contact Us: 301-405-0362, ENPM-C@UMD.EDU  
WWW.ENPM.EDU

Class Locations:  
College Park campus, remote sites in Maryland, On-Line,  
or ask us about classes at your workplace



A. JAMES CLARK  
SCHOOL OF ENGINEERING

OFFICE OF ADVANCED  
ENGINEERING EDUCATION

~ Message from Chair ~

### **Thank you, thank you!**

On recent ASME membership renewal forms, members are able to make voluntary donations to their local unit and their primary technical division. For ASME members whose local unit is the Washington DC section, their donations to the local unit are being sent directly to this section. We are grateful and thank very much all the members who made voluntary donations to our section when you renewed your membership. Please be assured that your donations are being put to good use in supporting our local programs. One such program is the annual ASME Washington DC Section Scholarship, which we revived last year and launched the Scholarship Fund. The total award of this scholarship in 2008 was \$5000.

### **Stan is New Leader of District A!**

Director Stan Halperson was elected District Leader for our district at the ASME Spring 2008 District A Leadership Meeting held in Easton Pennsylvania, May 02 - 03. Stan succeeds Karen Ohland whose term is expiring. The section's directors, officers and I, all extend our hearty congratulations to Stan on this accomplishment, and wish him a successful tenure of office!

Cheers,  
Iheanyi Eronini

# Report On ASME Washington DC Section Awards Dinner, May 01, 2008

Once again, all who attended the May 01, 2008 awards banquet at Mykonos Grill in Rockville, Maryland had a great evening. The five recipients of the 2008 ASME Washington DC Section Scholarship were in attendance, and received their awards in the amount of \$1,000 each; and some of the 2008 regional science fairs award winners who were at the dinner briefly explained their projects.

The ASME Washington DC Section Scholarship recipients for 2008 and their brief bios are as follows:

**Omar Monterrubio:** While still in high school, Omar gained early experience with engineering as an intern at NASA's Johnson Space Center for two summers, working with biomedical and electrical engineers. He graduated from Mount Carmel High School, Houston, Texas, as valedictorian in 2005 and received scholarships to attend **The Catholic University of America**, where he is currently a junior majoring in Mechanical Engineering. Also, while in high school, he received the MVP award for varsity soccer. Currently, he is the Treasurer for the ASME at CUA, Vice President of the Latin Alliance Club, an extraordinary minister of communion, a member of FOCUS (Filipino Organization of Catholic University Students), and member of the Career Services Student Advisory Board, while also playing intramural soccer and holding a work-study job as an office assistant in the Mechanical Engineering Department. After graduation in May 2009, he plans to seek full-time employment and then later plans to pursue Master's studies in engineering.



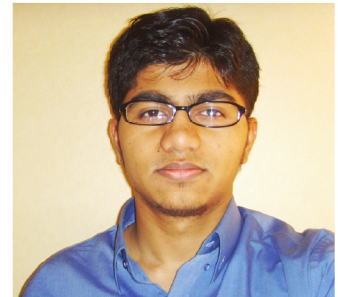
**James Stephenson:** Born and raised in Lakeland, Florida. James is currently seeking a Bachelor of Science degree in Mechanical Engineering with a minor in Physics at the **George Washington University (GWU)**. He is presently conducting research on the characteristics of the articulating surfaces that comprise the subtalar joint in the ankle. He plans to attend graduate school where he hopes to continue his studies in mechanical engineering and concentrate in fluid dynamics. James is the current vice-president of the GWU chapter of ASME and will be an executive board member for the Engineer's Council next year.



**Sandria Gray:** is one of those rare individuals that chose to become an engineer purely on passion. While some may believe that engineers are born and not made, Sandria dispels that notion by relentlessly pursuing her goal, armed with an abiding interest in mechanical engineering and a drive to succeed beyond the apparent horizons that her initial math and science background suggested. And all the hard work has apparently paid off, as Sandria is a May 2008 candidate for the Bachelor of Science degree in Mechanical Engineering, at **Howard University**.



**Meraj Shaikh:** is a rising senior in the mechanical engineering program at **The University of the District of Columbia**. A highly dedicated and motivated student, he made a recent presentation on "An Attempt to Understand the Energy Variations Near Van Allen Belts," and received first prize award for a presentation on "Life on Mars" at a Conference in North Carolina in March 2007. He has



*~ continued on page 4 ~*

***You can advertise in this newsletter!***

	one time/alternate months/every issue*	
<b>Full page</b>	-	\$400/\$1500/\$2700
<b>Half page</b>	-	\$250/\$1000/\$1800
<b>Quarter page</b>	-	\$150/\$500/\$900
<b>Business-Card size</b>	-	\$85/\$275/\$500

*\*50% discount on 'New Position Open' ads*

~ Awards Dinner from page 3 ~

also undertaken research projects on topics such as Nanotechnology and its Use in Engineering, Climatology, and Water Quality in the District of Columbia. Indeed, Meraj has maintained a continuous presence on the Dean's List at UDC. Outside school, he has performed work in drafting and design of system layouts, diffuser specification, duct sizing, and design of reheat coils. Meraj's other interests include studying religion for insight into logical reasoning; appreciate of literary works; and learning different styles of swimming.

## **CONGRATULATIONS TO ALL !!**

### **TURBO EXPO 2008 – BERLIN**



Plan now to participate in ASME Turbo Expo 2008, to be held June 9-13, at the Estrel Berlin Hotel & Convention Center in Berlin, Germany. ASME Turbo Expo brings together the best and the brightest in the worldwide gas turbine community to present the newest developments and discuss global issues affecting the industry. The conference will feature an expanded 5-day Technical Congress with sessions, tutorials and panel discussions, and a 3-day exposition showcasing the products and services of engine manufacturers, software developers, research laboratories, and other firms in the worldwide power industry. Presented by the ASME International Gas Turbine Institute, Turbo Expo will include a keynote session with industry leaders and several facility tours of companies located in the Berlin area. Online registration for Turbo Expo 2008 is now open. For more details, visit the Web site at <http://asmeconferences.org/TE08/index.cfm>, or call 800-843-2763.

### **Thinking about your career? Visit ASME's Career Center!**

Are you thinking about making some major career changes? Perhaps you are looking for a new job, finding out what you are worth, raising your profile at work or networking with other engineers to expand your career opportunities? ASME can help you energize your career this year with a variety of member benefits.

Find a job, build your resume or get advice at ASME's Online Career Center, the only job board dedicated exclusively to Mechanical Engineers. Find out what you're worth by taking the ASME Salary Survey, and get a basic report on how your salary compares to other engineers in your region, field or experience level.

Visit the ASME Career Center at <http://www.asme.org/jobs/> for more information.

### **Become A Mentor Today! Ementoring Opportunities for Early Career Engineers.**

Mentors are a great way to gain knowledge and learn from the experiences of experts in your field. ASME offers an e-mentoring service right at your fingers!

To learn more and sign up for mentors, log onto [http://www.asme.org/jobs/mentoring/Ementoring\\_Early\\_Career.cfm](http://www.asme.org/jobs/mentoring/Ementoring_Early_Career.cfm) or contact Noel Netel at [neteln@asme.org](mailto:neteln@asme.org).

-----  
**DONATE TO ASME WASHINGTON DC SECTION STUDENT SCHOLARSHIP FUND**

Please make checks payable to: ASME DC Scholarship Fund

**Mail checks to:**                    **Boris Ciorneiu**  
   **ASME DC Section Treasurer**  
   **20069 Great Falls Forrest Drive**  
   **Great Falls, Virginia 22066**

Please detach and include with your donation

Name/Organization \_\_\_\_\_

If organization, Responsible Officer \_\_\_\_\_

Address \_\_\_\_\_  
\_\_\_\_\_

Phone \_\_\_\_\_

Thank you for your generous contribution of:

\_\_\_\_ \$100 \_\_\_\_ \$500 \_\_\_\_ \$1000 \_\_\_\_ Other \_\_\_\_\_

