



# Washington DC Section

## Newsletter

### March 2008



**Editor:** Geoffrey Smith  
202-404-6324  
geoffrey.smith@nrl.navy.mil

<http://www.isr.umd.edu/~jwh2/asme/>

**Executive Secretary:** Andrea Gironda  
703-489-9503  
agironda@verizon.net

<u>Chairman</u>	<u>Vice-Chairman</u>	<u>Treasurer</u>	<u>Secretary</u>	<u>Executive Advisor</u>
I. Eronini 443-885-3868 eronini@eng.morgan.edu	Rattan Tawney 301-228-8820 rtawney@bechtel.com	Boris Ciorneiu 703-541-2626 boris.ciorneiu@metris.com	Mohsen Mosleh 202-806-6622 mmosleh@howard.edu	Gurmukh D. Mehta 703-414-3882 gurmukh.d.mehta@saic.com

### ASME DC Fellows Meeting - March 25, 2008

#### **ASME Washington Fellows Dinner**

**Date:** Tuesday, March 25, 2008

**Time:** 6:30 p.m. Cash Bar  
7:00 p.m. Dinner  
8:00 p.m. Presentation

**Location:** Market Inn  
200 E Street, SW  
Washington, DC

**Cost:** \$25 per person

**RSVP:** To make reservations, contact ASME Washington DC Section Executive Secretary Andrea Gironda by telephone (703-489-9503) or email [agironda@verizon.net](mailto:agironda@verizon.net) by March 20.

**Menu:** Choice of Salmon or Cajun Chicken Breast

**Program:**

1. George A. Borlase (Office of Science and Technology Policy)
2. Daniel Deckler (House Committee on Science and Technology)
3. Philip Grossweiler (Office of Congresswoman Heather Wilson)

Each year we have a dinner meeting with our ASME Washington Fellows who are assisting the government in analyzing technical issues. They give us some insights into what really happens when they bring some engineering thinking into the process.

1. Dr. George Borlase, P.E. is an advisor to the White House Office of Science and Technology Policy. Before his Fellow assignment, he was a staff member in the National Security Technology Department at the Johns Hopkins University

*~ continued on page 3 ~*

### **MESSAGE FROM THE CHAIR**

The ASME display on Family Day (February 16, 2008) at the Building Museum in Washington DC came off very well, as it did last year. There was as usual a large turn out of area families - lots of children with their parents and guardians, eager to explore and experience all the technology on display; including our display of wave phenomena, which featured an additional simulation this year: an exciting set of resonant bars that can be stroked to generate standing waves with near ear-piercing sound. We again commend Tom Beutner and the other members who assisted him for a job very well done!

**2008 Leadership Training Conference**

The 2008 ASME Leadership Training Conference (LTC) was held March 6-8, in Atlanta Georgia. Our section was well represented by at the conference by Raf and Siddiq, two of our "younger members" on the executive committee. Always an excellent opportunity to learn about great ideas, best practices, and useful resources for section operations, we are confident that the experiences gained at the conference would serve the executive board well in its continuing operations.

**Election of Officers and Directors**

The term of office of our current officers end June 30, 2008. This newsletter contains the ballots for members to vote for the succeeding officers as well as for the expiring positions on the executive board. The ballot features the slate of officers and directors recommended by the nominations committee, and includes, as usual, provision for write-in candidates. We urge all our members to please exercise their votes and return the ballots promptly.

*~ continued on page 2 ~*

## Upcoming Events

This issue of our newsletter includes our March event: The popular Annual ASME Washington Fellows Dinner, which features participants in the ASME Federal Government Fellowships Program. These are ASME members selected to spend a year working in government and providing engineering and technical advice to policy makers in Congress, Federal agencies, and the White House. The dinner meeting, which is holding on March 25 this year, is an exclusive opportunity for our membership to meet some of the fellowship recipients and learn what they have been doing during their term. Be sure to make your timely reservation for this meeting, if you have not already done so.

We expect to hold again this program year, an awards banquet during which we recognize Science and Engineering Fair winners in the engineering category, as judged by the Washington DC Section of ASME in five of this year's regional science fairs, as well as recipients of our scholarship awards to be made this year to area university students. We welcome members' and corporate support for these awards and other recognition of students, and again ask you to consider a contribution to the ASME Washington DC Section Student Scholarship Fund (a call for donations with relevant instructions can be found in each newsletter). We are also planning another Family event this year and would welcome your ideas and or participation (last year we had a family picnic at the annual International Submarine Races which was held at the David Taylor Model Basin in Bethesda, but would be held outside our region this year) ... Please stay tuned for future announcements regarding these upcoming events.

## Membership Survey on Professional Development

You must have seen, and hopefully participated in, our recent survey of our members on their opinions/preferences on professional development workshops and activities. While the final results are yet to be analyzed, the early returns were showing about 80% of the respondents interested in a professional development course, but with the topics suggested by these respondents quite wide ranging. We commend Howard

# LEARN MORE, EARN MORE IT'S THAT SIMPLE!

- Is your job market becoming saturated?
- Do you need a promotion or raise?
- Do you see career growth in what you are doing now?
- Are you the only engineer in your company without an advanced degree?
- Would you be marketable in a job search?

### Program Options

Aerospace Engineering  
Chemical Engineering  
Civil & Environmental Engineering  
Electrical & Computer Engineering  
Energetic Concepts  
Environmental Engineering  
Fire Protection Engineering  
Materials Science & Engineering  
Mechanical Engineering  
Nuclear Engineering  
Project Management  
Reliability Engineering  
Software Engineering  
Systems Engineering

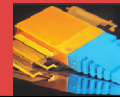
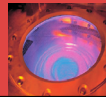
The A. James Clark School of Engineering is the highest-ranked engineering graduate school in the region and ranked No. 16 in the nation by *U.S. News & World Report*. With those credentials, it's the perfect choice for advancing your career and keeping you current with the latest technological developments in your field or in transferring to a new area of expertise.

Master of Engineering (30-credits)  
Graduate Certificate in Engineering (12-credits)  
Custom Short Courses, Workshops, License Reviews

Apply Today: NO GRE EXAMS  
NO THESIS TO COMPLETE DEGREE  
NO QUALIFYING EXAMS  
CLASSES OFFERED TO ACCOMMODATE  
THE WORKING PROFESSIONAL

Contact Us: 301-405-0362, ENPM-C@UMD.EDU  
WWW.ENPM.EDU

Class Locations:  
College Park campus, remote sites in Maryland, On-Line,  
or ask us about classes at your workplace



A. JAMES CLARK  
SCHOOL OF ENGINEERING

OFFICE OF ADVANCED  
ENGINEERING EDUCATION

and Siddiq for their continuing work in this area. Our March 2007 newsletter contained a demographic analysis of our then membership, showing among other statistics, the numbers of our members whose reported technical interest is in various technical divisions and the numbers employed by various organizations. It is hoped that such data and the survey results would guide the executive committee as it explores professional development activities for our members.

Your observations, comments, and other feedback are welcomed.

Cheers,

Iheanyi Eronini

### You can advertise in this newsletter!

one time/alternate months/every issue\*

Full page	-	\$400/\$1500/\$2700
Half page	-	\$250/\$1000/\$1800
Quarter page	-	\$150/\$500/\$900
Business-Card size	-	\$85/\$275/\$500

\*50% discount on 'New Position Open' ads

**REVIEW COURSES FOR**  
**FUNDAMENTALS OF ENGINEERING (FE) EXAM**  
**AND**  
**PROFESSIONAL ENGINEERING (PE) EXAM**

Register now for classes beginning on

**FEBRUARY 23, 2008**

**SEPTEMBER 6, 2008**

[www.lkacc.com/training.asp](http://www.lkacc.com/training.asp)

**\*\* 10% discount for ASME members \*\***

*Hundreds of practice problems and realistic 8-hour practice test will simulate the actual exam  
Materials/problems based on guidelines from the National Council of Examiners for Engineering and Surveying (NCEES)*

*~ Fellows Dinner from page 1 ~*

Applied Physics Laboratory (JHUAPL), where he evaluated threats in support of the US Navy Nuclear Weapon Security program. Prior to working at JHUAPL, George spent ten years on active duty in the US Coast Guard, where he was a regulator in the Marine Safety program. His work included forensic investigations into accidents, including the worst domestic fishing vessel accident in the last half-century. He served as the chair of a Society of Naval Architects and Marine Engineers panel reviewing changes in Coast Guard policy regarding passenger loading. He earned his BS degree in Mechanical Engineering from the US Coast Guard Academy, an MSE in Mechanical Engineering and Naval Architecture/Marine Engineering from the University of Michigan, and a PhD in Mechanical Engineering from Catholic University of America.

2. Dr. Dan Deckler, P.E. is assigned to the House Committee on Science and Technology where he is analyzing various issues, including globalization, nanotechnology, and climate change. He is a Professor of Engineering at The University of Akron Wayne College and is currently on sabbatical. He graduated from Ohio Northern University in 1985 with a bachelor's degree in mechanical engineering. While an undergraduate Dan worked for Rockwell International in Downey, California where he worked on both the space shuttle and space station projects. After graduating, he worked for The Timken Company in Canton, Ohio and Loral Defense Systems in Akron, Ohio from 1985 to 1991. While at Loral he was an engineer on various antisubmarine warfare projects and the F-15 flight simulator. During this time he obtained his master's degree in mechanical engineering from The University of Akron. In 1991 he joined The University of Akron Wayne College engineering faculty. In 2002 he obtained his Ph.D. in engineering from The University of Akron. His dissertation was in the area of controllable bearing technology.

3. Phil Grossweiler is a technical advisor to Congresswoman Heather Wilson of New Mexico. This has included energy security, with an emphasis on applying systems approaches and on integrating national

*~ continued on page 4 ~*

security issues and economic constraints into energy security planning. Before his Fellow assignment he was a consultant in the energy industry with concentration on business and technology issues related to marine gas transportation and liquefied natural gas projects. He worked for 23 years at Exxon in domestic and international affiliates. His Exxon assignments included responsibilities as Project Manager, Project Engineer, Research Team Leader, Business Analyst, and Operations Research Analyst. He worked on Prudhoe Bay Alaska Oil Field issues for 10 years serving on the Prudhoe Operations Subcommittee, on Project Teams implementing capital projects and on joint partner teams studying options to commercialize Alaskan natural gas resources. He worked for Esso Norway for 8 years in Corporate Planning and coordinated engineering studies for gas field developments including options for CO2 capture and sequestration. He served as a Naval Engineer in the US Coast Guard for 11 years. He graduated from the U.S. Coast Guard Academy (BS) and MIT (MS degrees in Ocean Engineering and Mechanical Engineering).

**Directions:**

The restaurant is located near NASA, two blocks from the Federal Center Southwest Metro stop. There is ample free parking either on the street (after 6:30 p.m.) or in the Market Inn's valet parking lot. Patents. For more information on the event, please see the Baltimore Section Website <<http://sections.asme.org/baltimore/>> and the February Newsletter.

**ASME ACCEPTING APPLICATIONS FOR 2008-09 FEDERAL GOVERNMENT FELLOWSHIPS**

ASME is currently accepting applications for the following Federal Government Fellowship positions:

Congressional Fellowships

ASME is accepting applications from qualified candidates interested in serving as a 2008-09 Congressional Fellow. The Federal Fellows program enables selected ASME members to spend one year in Washington, D.C. working with the staff of a congressional committee, U.S. senator or U.S. Representative. Federal Government Fellowships provide a valuable public service to the nation while providing engineers with a unique opportunity to participate directly in the policy making process. Congressional Fellows may serve from September 2008 through August 2009 - or January 2009 through December 2009 - at their option. The deadline to submit an application for the Congressional Fellowship is April 1, 2008.

Department of Commerce Fellowship

ASME is also accepting applications from qualified candidates interested in serving a year at the U.S. Department of Commerce in the Manufacturing and Services (MAS) Office of Standards Liaison (OSL). The Fellow will work with U.S. stakeholders involved in the standardization process, including individual companies, industry associations, standards developing organizations, and the American National Standards Institute on trade-related standards issues affecting U.S. competitiveness, innovation and growth. OSL works on issues involving all sectors and in all overseas markets, although there is a greater focus on emerging and technology-related sectors and critical markets such as Europe and China. Applicants for this position must have strong technical, interpersonal, organizational, and oral and written communication skills, as well as substantive knowledge or experience in an industry sector and the standardization process. The start date for the DOC fellowship is flexible.

A stipend of \$55,000 will be awarded to each Fellow for the year. All Fellowship applicants must be a U.S. citizen and an ASME member at the time of application. The following credentials are encouraged: At least five years of professional experience, an advanced engineering degree, professional engineer registration, and some public policy experience. An online application is available at <https://secure.asme.org/fedgovfellows/appform.cfm>

For additional information about the Federal Fellows program, visit [http://www.asme.org/NewsPublicPolicy/GovRelations/Programs/Federal\\_Government.cfm](http://www.asme.org/NewsPublicPolicy/GovRelations/Programs/Federal_Government.cfm) or contact Kathryn Holmes, director, ASME Government Relations, at [holmesk@asme.org](mailto:holmesk@asme.org) or 202/785-7390.

## Ballot for Selection of ASME Washington DC Section Executive Committee

Each of your Directors and Officers are elected to serve two year terms, with half elected every year. The slate for this year put forth by the Nominating Committee is listed below. Please indicate your selections, noting that write-ins are welcome. The vote for Officers and Directors is separate. You may vote for as many of the Officers as you like. You may also vote for some or all the nominees for Director, but only for a maximum of 5 Directors. Once your ballot is complete please either print and mail a hard copy, or submit by email with all information to the Executive Secretary:

Andrea Gironda  
4909 Sunflower Drive  
Rockville, MD 20853

agironda@verizon.net

**Note that voting closes April 25th, 2008**

ASME Member Name: \_\_\_\_\_

ASME Member Number: \_\_\_\_\_

**yes**  
**no**

All of the Below

**Officers**  
**Chair:**

Rattan Tawney

**Vice-chair**

Rafael Mandujano

**Treasurer:**

Boris Ciorneiu

**Secretary:**

Muhammad Qidwai

**Directors**

Charles Akula (2 year term)

Geoffrey Smith (2 year term)

Ronald Rolfe (2 year term)

Horace Whitworth (2 year term)

Gurmukh Mehta (2 year term)

\_\_\_\_\_ (write-in)

-----  
**DONATE TO ASME WASHINGTON DC SECTION STUDENT SCHOLARSHIP FUND**

Please make checks payable to: ASME DC Scholarship Fund

**Mail checks to:**                    **Boris Ciorneiu**  
   **ASME DC Section Treasurer**  
   **20069 Great Falls Forrest Drive**  
   **Great Falls, Virginia 22066**

Please detach and include with your donation

Name/Organization \_\_\_\_\_

If organization, Responsible Officer \_\_\_\_\_

Address \_\_\_\_\_  
\_\_\_\_\_

Phone \_\_\_\_\_

Thank you for your generous contribution of:

\_\_\_\_ \$100 \_\_\_\_ \$500 \_\_\_\_ \$1000 \_\_\_\_ Other \_\_\_\_\_

