

# Washington DC Section

Newsletter  
June 2008



**Editor:** Geoffrey Smith  
202-404-6324  
geoffrey.smith@nrl.navy.mil

<http://www.isr.umd.edu/~jwh2/asme/>

**Executive Secretary:** Andrea Gironda  
703-489-9503  
agironda@verizon.net

**Chairman**

I. Eronini  
443-885-3868  
eronini@eng.morgan.edu

**Vice-Chairman**

Rattan Tawney  
301-228-8820  
rtawney@bechtel.com

**Treasurer**

Boris Ciorneiu  
703-444-9099  
ciorneiu@netzero.com

**Secretary**

Mohsen Mosleh  
202-806-6622  
mmosleh@howard.edu

**Executive Advisor**

Gurmukh D. Mehta  
703-414-3882  
gurmukh.d.mehta@saic.com

## ASME Family Hike

### Come Join Us!

**Date:** Saturday, June 28th

**Time:** 10:00 a.m.

**Location:** Great Falls, Maryland  
Great Falls Tavern Visitor Center  
11710 MacArthur Blvd.  
Potomac, MD 20854  
301.767.3714

**Cost:** Free (\$5/car fee to enter the Park)

**RSVP:** To let us know you're coming, contact ASME Washington DC Section Executive Secretary Andrea Gironda by telephone (703-489-9503) or email [agironda@verizon.net](mailto:agironda@verizon.net) by **June 26th**.

**Menu:** ASME will provide sandwiches and fruit on the trail

**Description:** Bring your family and join us to hike the Billy Goat Trail in Great Falls on the Maryland Side. The Great Falls Tavern Visitor Center is located on MacArthur Blvd in Potomac, MD, and is part of the C&O Canal National Park. We'll meet by the Visitor Center at 10am and head out along the tow path toward the Billy Goat Trail. We'll hike Section A together and have a picnic lunch along the way. The trail is 1.7 miles + a mile or two on the towpath to make the round trip, and involves some scrambling over rocks. If you like, there are other options at the park for hanging around the falls or extending the hike.

A description of the park may be found here:

<http://www.nps.gov/choh/>

and a trail map may be found here:

<http://www.nps.gov/choh/planyourvisit/parkmaps.htm>

## MESSAGE FROM THE CHAIR

I hope you are finding ways to keep cool with the early arrival of high temperatures and humidity in our area. As my term as chair of the Washington DC Section of ASME comes to a close, I would like to thank all the people who helped to make smooth my tenure. I am very grateful to our members for the opportunity to have served them in this capacity and I thank the executive committee for its active support during this two-year period. And a busy time it has been, the section successfully explored some new types of programming, reactivated and significantly expanded its student scholarship program, and even lunched a scholarship fund to anchor it. I would like to personally thank each of our sponsors and member voluntary donors for their contributions.

I am especially pleased with the number of our "younger members" who joined our executive board during this period, and some of them would be assuming positions as Officers of the section this year. Congratulations to all the officers and directors (see Election Results elsewhere in this newsletter) elected this year! I am certain Rattan Tawney who assumes the position of Chair of the section effective July 01, 2008, would be a great leader for our section in the succeeding period. I wish Rattan and the other officers and directors a successful tenure of office.

### 14th IHTC 2010

ASME would be hosting the 14th International Heat Transfer Conference scheduled to hold in August 2010 in Washington, DC. Our section executive board has established a subcommittee to interface with, and assist, as needed, the conference steering committee.

~ continued on page 2 ~

Joint Dinner Meeting - Sept. 11th  
ASME DC -- Tau Beta Pi -- DCSPE

## Reception at the Embassy of Estonia

**Date:** Thursday, September 11, 2008

**Time:** 6:00 p.m. to 8:00 p.m.

**Location:** Embassy of Estonia  
2131 Massachusetts, Ave. NW  
Washington, D.C.

**Cost:** \$30 per person

**RSVP:** To register for this event, call the ASME Washington Section Executive Secretary, Andrea Gironda at (703) 489-9503 or e-mail her at [agironda@verizon.net](mailto:agironda@verizon.net) by September 5.

**Program:** Since Estonia regained its independence, it has made great progress and has become a member of NATO. Estonia has participated among the NATO forces in Afghanistan. Estonia is also a member of the European Union. We will have a chance to learn more about Estonia and what is happening there in areas such as energy and commerce.

Our host is Ambassador Vaino Reinart. Early in his career he had been a research engineer at the Institute of Chemical Physics and Biophysics of the Estonian Academy of Sciences. He has been in the Ministry of Foreign Affairs since 1992 and served as Ambassador to the European Union before coming to Washington.

The evening will include a buffet reception with a chance to talk with the Embassy staff, fellow engineers, and guests. We will be joined at this event by the D.C. Society of Professional Engineers and the Washington Alumni

*~ continued on page 3 ~*

# LEARN MORE, EARN MORE IT'S THAT SIMPLE!

- Is your job market becoming saturated?
- Do you need a promotion or raise?
- Do you see career growth in what you are doing now?
- Are you the only engineer in your company without an advanced degree?
- Would you be marketable in a job search?

#### Program Options

Aerospace Engineering  
Chemical Engineering  
Civil & Environmental Engineering  
Electrical & Computer Engineering  
Energetic Concepts  
Environmental Engineering  
Fire Protection Engineering  
Materials Science & Engineering  
Mechanical Engineering  
Nuclear Engineering  
Project Management  
Reliability Engineering  
Software Engineering  
Systems Engineering

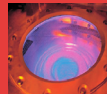
The A. James Clark School of Engineering is the highest-ranked engineering graduate school in the region and ranked No. 16 in the nation by *U.S. News & World Report*. With those credentials, it's the perfect choice for advancing your career and keeping you current with the latest technological developments in your field or in transferring to a new area of expertise.

Master of Engineering (30-credits)  
Graduate Certificate in Engineering (12-credits)  
Custom Short Courses, Workshops, License Reviews

**Apply Today:** NO GRE EXAMS  
NO THESIS TO COMPLETE DEGREE  
NO QUALIFYING EXAMS  
CLASSES OFFERED TO ACCOMMODATE  
THE WORKING PROFESSIONAL

**Contact Us:** 301-405-0362, [ENPM-C@UMD.EDU](mailto:ENPM-C@UMD.EDU)  
[WWW.ENPM.EDU](http://WWW.ENPM.EDU)

**Class Locations:**  
College Park campus, remote sites in Maryland, On-Line,  
or ask us about classes at your workplace



A. JAMES CLARK  
SCHOOL OF ENGINEERING

OFFICE OF ADVANCED  
ENGINEERING EDUCATION

*~ Message from Chair ~*

Members interested in being part of this subcommittee may contact Rattan or any member of the executive board. I would also like to use this opportunity to again urge your active participation in your local section of ASME. None of the accomplishments of the organization or our section would be possible without the efforts of the many volunteers who are willing and able to give back to their profession. You do not need to be a director or committee member to become active in the section, again just get in touch with any member of the executive board.

### Looking Forward

Featured in this newsletter are the announcements for our Family event for this year, and our September meeting. Get ready your hiking shoes and join the ASME Family Hike at Great Falls Maryland on June the 28th, and your section will provide the sandwiches and munchies. Then on September the 11th, you are invited to our Embassy Dinner at the Embassy of Estonia. Please make your reservations early, mark your calendars and plan to be there, and see you then!

Cheers,

Iheanyi Eronini

~ Embassy Reception ~

Chapter of Tau Beta Pi.

The cost of the event is \$30 per person. The buffet will include veal loin with black trumpet mushroom sauce, vegetable pasta risotto, aragula salad with cherry tomatoes, and cucumber gazpacho. Dessert will be chocolate coffee mousse and pineapple tart. There will be wine, beer, and soft drinks.

**Directions:** The Embassy of Estonia is located at the corner of Massachusetts Avenue and 22nd Street NW, at the intersection with Florida Avenue. If you take Metro, it's a 3 block walk from Dupont Circle Station on the Red Line. Take the north exit from the station and walk west on Q Street.

Election Results

The entire slate as offered has been voted in, with the following results:

- Chair:** Rattan Tawney
- Vice-Chair:** Rafael Mandujano
- Treasurer:** Boris Ciorneiu
- Secretary:** Muhammad Qidwai

Additionally, the following individuals were elected to serve on the Board:

- Charles Akula
- Geoffrey Smith
- Ronald Rolfe
- Horace Whitworth
- Gurmukh Mehta

**Thanks to everyone who voted!**

Your age by Diner & Restaurant Math

It takes less than a minute. Work this out as you read.

Be sure you don't read the bottom until you've worked it out!

This is not one of those waste of time things, it's fun.

1. First of all, pick the number of times a week that you would like to go out to eat. (more than once but less than 10)
2. Multiply this number by 2 (just to be bold)
3. Add 5
4. Multiply it by 50
5. If you have already had your birthday this year add 1758...

If you haven't, add 1757.

6. Now subtract the four digit year that you were born.

You should have a three digit number

The first digit of this was your original number. (i.e. how many times you want to go out to restaurants in a week.)

The next two numbers are -----

**YOUR AGE!** ----- (Oh YES, it is!)

(see page 4 for a very simple explanation)

**You can advertise in this newsletter!**

one time/alternate months/every issue\*

<b>Full page</b>	-	\$400/\$1500/\$2700
<b>Half page</b>	-	\$250/\$1000/\$1800
<b>Quarter page</b>	-	\$150/\$500/\$900
<b>Business-Card size</b>	-	\$85/\$275/\$500

*\*50% discount on 'New Position Open' ads*

### **Become A Mentor Today! Ementoring Opportunities for Early Career Engineers.**

Mentors are a great way to gain knowledge and learn from the experiences of experts in your field. ASME offers an e-mentoring service right at your fingers!

To learn more and sign up for mentors, log onto [http://www.asme.org/jobs/mentoring/Ementoring\\_Early\\_Career.cfm](http://www.asme.org/jobs/mentoring/Ementoring_Early_Career.cfm) or contact Noel Netel at [neteln@asme.org](mailto:neteln@asme.org)

### **Thinking about your career? Visit ASME's Career Center!**

Are you thinking about making some major career changes? Perhaps you are looking for a new job, finding out what you are worth, raising your profile at work or networking with other engineers to expand your career opportunities? ASME can help you energize your career this year with a variety of member benefits.

Find a job, build your resume or get advice at ASME's Online Career Center, the only job board dedicated exclusively to Mechanical Engineers. Find out what you're worth by taking the ASME Salary Survey, and get a basic report on how your salary compares to other engineers in your region, field or experience level.

Visit the ASME Career Center at <http://www.asme.org/jobs/> for more information.

### **Inspiring Engineering Diversity**

Engineer Your Life (EYL) and the National Association for College Admissions Counseling (NACAC) are teaming up with ASME at dozens of college fairs for high school students throughout the United States. The EYL campaign has developed, tested and is now providing messages and materials to promote engineering to college-bound high school girls. Volunteers are encouraged to become part of the campaign by participating in the fairs. EYL fair exhibits are designed to break down commonly held perceptions about engineering and encourage girls to consider it as a college and career option. Interested in helping out? Contact Marina Stenos at [stenosm@asme.org](mailto:stenosm@asme.org) for more information.

### **Expand Your Horizons Volunteer with ASME Using the Volunteer Opportunities Bulletin Board (VOBB)**

Have you thought about volunteering at ASME, but don't know where to start? Try the VOBB. If you are an experienced ASME volunteer and would like to find a new project, the VOBB is the place for you. As a tool designed to help volunteer leaders promote local Section and Society-wide positions, it opens the door to new opportunities. The opportunities for involvement include pre-college and educational activities, standards development, government relations, honors and awards selection, the development of new programs and more.

To learn more about the VOBB and the volunteer positions available, go to <http://volunteer.asme.org/vobb/>.

### **Restaurant Math**

$$\begin{aligned} 50(2X + 5) + 1757 - \text{birthyear} &= 100X + \text{AGE} \quad \text{-- original problem statement} \\ 100X + 2007 - \text{birthyear} &= 100X + \text{AGE} \quad \text{-- left side rewritten for clarity} \\ 2007 - \text{birthyear} &= \text{AGE} \end{aligned}$$

-----  
**DONATE TO ASME WASHINGTON DC SECTION STUDENT SCHOLARSHIP FUND**

Please make checks payable to: ASME DC Scholarship Fund

**Mail checks to:**                    **Boris Ciorneiu**  
   **ASME DC Section Treasurer**  
   **20069 Great Falls Forrest Drive**  
   **Great Falls, Virginia 22066**

Please detach and include with your donation

Name/Organization \_\_\_\_\_

If organization, Responsible Officer \_\_\_\_\_

Address \_\_\_\_\_  
\_\_\_\_\_

Phone \_\_\_\_\_

Thank you for your generous contribution of:

\_\_\_\_ \$100 \_\_\_\_ \$500 \_\_\_\_ \$1000 \_\_\_\_ Other \_\_\_\_\_

