

Washington DC Section

Newsletter

August 2008



Editor: Geoffrey Smith
202-404-6324
geoffrey.smith@nrl.navy.mil

<http://www.isr.umd.edu/~jwh2/asme/>

Executive Secretary: Andrea Gironda
703-489-9503
agironda@verizon.net

| <u>Chairman</u> | <u>Vice-Chairman</u> | <u>Treasurer</u> | <u>Secretary</u> | <u>Executive Advisor</u> |
|--|--|--|---|--|
| Rattan Tawney 301-228-8820 rtawney@bechtel.com | Rafael Mandujano 202-558-7959 mandujanor2@asme.org | Boris Ciorneiu 703-444-9099 ciorneiu@netzero.com | M. A. Siddiq Qidwai 202-767-1466 muhammad.a.qidwai@saic.com | I. Eronini 443-885-3868 eronini@eng.morgan.edu |

ASME DC Embassy Reception - Sept. 11, 2008

Reception at the Embassy of Estonia

Date: Thursday, September 11, 2008

Time: 6:00 p.m. to 8:00 p.m.

Location: Embassy of Estonia
2131 Massachusetts Avenue, NW
Washington, D.C.

Cost: \$30 per person

RSVP: To register for this event, call the ASME Washington Section Executive Secretary, Andrea Gironda at (703) 489-9503 or e-mail her at agironda@verizon.net by **September 5**.

Program: Since Estonia regained its independence, it has made great progress and has become a member of NATO. Estonia has participated among the NATO forces in Afghanistan. Estonia is also a member of the European Union. We will have a chance to learn more about Estonia and what is happening there in areas such as energy and commerce.

Our host is Ambassador Vaino Reinart. Early in his career he had been a research engineer at the Institute of Chemical Physics and Biophysics of the Estonian Academy of Sciences. He has been in the Ministry of Foreign Affairs since 1992 and served as Ambassador to the European Union before coming to Washington.

The evening will include a buffet reception with a chance to talk with the Embassy staff, fellow engineers, and guests. We will be joined at this event by the D.C. Society of Professional Engineers and the Washington Alumni Chapter of Tau Beta Pi.

~ continued on page 2 ~

MESSAGE FROM THE CHAIR

I would like to take this opportunity to thank out-going Chair - I.Eronini and other Executive Board officers for their work in making a successful 2007-08 year for the Washington DC section. We are also grateful to the membership for their continued support, interest, and participation. I along with other Executive Board officers and section directors look forward with your continued support to make upcoming year full of meaningful program events and activities that will result in delivering enhanced value to ASME DC Section members. The audit report in form of Unit Operations Budget and Annual financial Report for the term July, 2007-June 2008 was completed in time and submitted to ASME. Based on activities and accomplishments, we expect to get the allocation funds from ASME comparable to last year. This will help us to support challenging activities during this term year.

The Embassy Dinner at Embassy of Estonia is scheduled on September 11, 2008. The host will be distinguished Ambassador Vaino Reinart. You are invited to this exciting event and learn more about Estonia and in areas of energy and commerce. Please make your plans and reservations early.

In order to achieve any accomplishment, it requires combined efforts of all of us including members. I would therefore like to encourage each of you for active participation in the local section of ASME and make it an outstanding and successful section.

Rattan

~ Embassy Reception from page 1 ~

The buffet will include veal loin with black trumpet mushroom sauce, vegetable pasta risotto, aragula salad with cherry tomatoes, and cucumber gazpacho. Dessert will be chocolate coffee mousse and pineapple tart. There will be wine, beer, and soft drinks.

Directions: The Embassy of Estonia is located at the corner of Massachusetts Avenue and 22nd Street NW, at the intersection with Florida Avenue. If you take Metro, it's a 3 block walk from Dupont Circle Station on the Red Line. Take the north exit from the station and walk west on Q Street.

ASME PeerLinkSM Expands Networking and Collaboration Opportunities for Engineers

Responding to the growing need of engineers and other technical professionals to connect and exchange information, ASME has launched its new communities of practice ASME PeerLink.

ASME PeerLink now offers new features designed to enhance your experience connecting, collaborating and networking with your peers. ASME PeerLink helps broaden communication capabilities through blogging, interactive whiteboards, document collaboration and real time chat.

To learn more and register, go to <http://peerlink.asme.org>.

Expand Your Horizons Volunteer with ASME Using the Volunteer Opportunities Bulletin Board (VOBB)

Have you thought about volunteering at ASME, but don't know where to start? Try the VOBB. If you are an experienced ASME volunteer and would like to find a new project, the VOBB is the place for you. As a tool designed to help volunteer leaders promote local Section and Society-wide positions, it opens the door to new opportunities. The opportunities for involvement include pre-college and educational activities, standards development, government relations, honors and awards selection, the development of new programs and more.

To learn more about the VOBB and the volunteer positions available, go to <http://volunteer.asme.org/vobb/>.

LEARN MORE, EARN MORE IT'S THAT SIMPLE!

- Is your job market becoming saturated?
- Do you need a promotion or raise?
- Do you see career growth in what you are doing now?
- Are you the only engineer in your company without an advanced degree?
- Would you be marketable in a job search?

Program Options

Aerospace Engineering
Chemical Engineering
Civil & Environmental Engineering
Electrical & Computer Engineering
Energetic Concepts
Environmental Engineering
Fire Protection Engineering
Materials Science & Engineering
Mechanical Engineering
Nuclear Engineering
Project Management
Reliability Engineering
Software Engineering
Systems Engineering

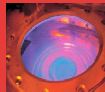
The A. James Clark School of Engineering is the highest-ranked engineering graduate school in the region and ranked No. 16 in the nation by *U.S. News & World Report*. With those credentials, it's the perfect choice for advancing your career and keeping you current with the latest technological developments in your field or in transferring to a new area of expertise.

Master of Engineering (30-credits)
Graduate Certificate in Engineering (12-credits)
Custom Short Courses, Workshops, License Reviews

Apply Today: NO GRE EXAMS
NO THESIS TO COMPLETE DEGREE
NO QUALIFYING EXAMS
CLASSES OFFERED TO ACCOMMODATE
THE WORKING PROFESSIONAL

Contact Us: 301-405-0362, ENPM-C@UMD.EDU
WWW.ENPM.EDU

Class Locations:
College Park campus, remote sites in Maryland, On-Line,
or ask us about classes at your workplace



A. JAMES CLARK
SCHOOL OF ENGINEERING

OFFICE OF ADVANCED
ENGINEERING EDUCATION

You can advertise in this newsletter!

one time/alternate months/every issue*

| | | |
|--------------------|---|---------------------|
| Full page | - | \$400/\$1500/\$2700 |
| Half page | - | \$250/\$1000/\$1800 |
| Quarter page | - | \$150/\$500/\$900 |
| Business-Card size | - | \$85/\$275/\$500 |

*50% discount on 'New Position Open' ads

Thinking about your career? Visit ASME's Career Center!

Are you thinking about making some major career changes? Perhaps you are looking for a new job, finding out what you are worth, raising your profile at work or networking with other engineers to expand your career opportunities? ASME can help you energize your career this year with a variety of member benefits.

Find a job, build your resume or get advice at ASME's Online Career Center, the only job board dedicated exclusively to Mechanical Engineers. Find out what you're worth by taking the ASME Salary Survey, and get a basic report on how your salary compares to other engineers in your region, field or experience level.

Visit the ASME Career Center at <http://www.asme.org/Jobs/> for more information.



Teams Announced for 2008 ASME I•Show

Applications jumped a whopping 40% from student teams eager to compete in the second annual ASME Innovation Showcase (I•Show), scheduled for Oct. 31st in conjunction with the International Mechanical Engineering Congress & Exposition in Boston, MA.

After reviewing thirty-two submissions, a judging panel selected the top ten collegiate teams to move forward and compete in the 2008 ASME I•Show. Striving to produce the next “big idea,” these students have developed technologies and innovations with enthusiasm and commitment. They’re eagerly ready for the next step: product assessment and commercialization.

At the ASME I•Show on Oct. 31, the following teams will “pitch” their product to a judging panel of industry experts, media, successful entrepreneurs, and Intellectual Property specialists to gain industry recognition and access to over \$20K in seed funds.

Baylor University – *Converting Coconuts Into Value Added Products*

Johns Hopkins University – *Head Impulse Test Device*

Johns Hopkins University – *SurgyPack*

Massachusetts Institute of Technology – *Robopsy: Inexpensive Medical Robotics*

Pennsylvania State University – *Mashavu*

Rensselaer Polytechnic Institute – *Automated Landmine Removal*

University of California, Berkeley – *Advanced Affordable Solar Water Heater*

University of California, Berkeley – *Berkeley Electro-Coagulation Arsenic Remediation (BEAR)*

University of California, San Francisco – *Titan Medical*

Virginia Military Institute – *The Extremely Low Frequency Seismic Detector*

Go to www.asme.org/events/ishow for team details and further information on the ASME I•Show.

Inspiring Engineering Diversity

Engineer Your Life (EYL) and the National Association for College Admissions Counseling (NACAC) are teaming up with ASME at dozens of college fairs for high school students throughout the United States. The EYL campaign has developed, tested and is now providing messages and materials to promote engineering to college-bound high school girls. Volunteers are encouraged to become part of the campaign by participating in the fairs. EYL fair exhibits are designed to break down commonly held perceptions about engineering and encourage girls to consider it as a college and career option. Interested in helping out? Contact Marina Stenos at stenosm@asme.org for more information.

Become A Mentor Today! Ementoring Opportunities for Early Career Engineers.

Mentors are a great way to gain knowledge and learn from the experiences of experts in your field. ASME offers an e-mentoring service right at your fingers!

To learn more and sign up for mentors, log onto http://www.asme.org/jobs/mentoring/Ementoring_Early_Career.cfm or contact Noel Netel at neteln@asme.org

DONATE TO ASME WASHINGTON DC SECTION STUDENT SCHOLARSHIP FUND

Please make checks payable to: ASME DC Scholarship Fund

Mail checks to: **Boris Ciorneiu**
 ASME DC Section Treasurer
 20069 Great Falls Forrest Drive
 Great Falls, Virginia 22066

Please detach and include with your donation

Name/Organization _____

If organization, Responsible Officer _____

Address _____

Phone _____

Thank you for your generous contribution of:

____ \$100 ____ \$500 ____ \$1000 ____ Other _____

