



Washington DC Section

Newsletter

September 2007



Editor: Geoffrey Smith
202-404-6324
geoffrey.smith@nrl.navy.mil

<http://www.isr.umd.edu/~jwh2/asme/>

Executive Secretary: Andrea Gironda
703-489-9503
agironda@verizon.net

<u>Chairman</u>	<u>Vice-Chairman</u>	<u>Treasurer</u>	<u>Secretary</u>	<u>Executive Advisor</u>
I. Eronini 443-885-3868 eronini@eng.morgan.edu	Rattan Tawney 301-228-8820 rtawney@bechtel.com	Charles Akula 301-228-7278 cakula@bechtel.com	Mohsen Mosleh 202-806-6622 mmosleh@howard.edu	Gurmukh D. Mehta 703-414-3882 gurmukh.d.mehta@saic.com

ASME Washington, DC Section Dinner Meeting

Dr. Michael M. Reischman
Vice President-Government Relations
speaking on
**Government Relations at ASME:
Mechanisms and Impact**

**Last minute notice - Call now to
check availability!**

Date: Wednesday, Oct. 10, 2007

Time: 6:30 p.m. - Cash bar
7:00 p.m. - Dinner
8:00 p.m. - Presentation

Location: Mykonos Grill, 121 Congressional Lane, Rockville, MD. 0852-1542. Congressional Lane is off Rockville Pike. Driving directions can be found at: <http://www.mykonosgrill.com/CONTACT.asp> or by calling the restaurant at 301-770-5999. Free parking with no time limit is available in Congressional Plaza or around the restaurant.

Cost: \$25 per person

RSVP: For reservations, contact ASME Washington, DC Section Executive Secretary, Andrea Gironda, by phone (703)489-9503 or e-mail: agironda12@comcast.net by COB, Monday, Oct.8. Note: space is limited so reserve early. No shows will be billed.

Menu: Hors doeuvres and salad.

Entrees: Your choice of oven roasted leg of lamb, shrimp and chicken kebabs, fresh fillet of salmon, and vegetarian platter.

~ continued on page 3 ~

MESSAGE FROM THE CHAIR

Although our new program year began July 1, 2007, I would like to use this opportunity to thank the executive committee for their work in delivering to the section a successful 2006-2007 program year. We are grateful to the membership for their interest, support, and participation. I look forward, with your continued support, to an eventful second year of exiting programs and even greater returned value to members. I would also like to congratulate returning directors, Bob Hershey and Tom Beutner, and especially congratulate and welcome to the executive committee, Rafael Mandujano, Howard Berkof, and Siddiq Qidwai, all of whom were successful in the elections held earlier this year. I look forward to working with all of you.

Audit Report

As required by the section bylaws, the audit report, here in the form of the documents transmitted to ASME, that is the Unit Operations Budget and the Annual Financial Report for the section for the July 1, 2006 - June 30, 2007 program year, is to be published in the next newsletter. The report shows an expenditure of \$3,750 under Student Section Assistance. \$3,200 of this amount was for scholarships awarded to four area university students featured in our May newsletter. A particular financial objective we would like to initiate this year is an annual contribution by the section for an Endowed Scholarship Fund, which in time would grow sufficiently to fund the student scholarships entirely out of the fund's income.

Get Active with a DC Section Committee

If you would like to become active but you are not

~ continued on page 2 ~

~ Message from Chair continued from page 1 ~

sure in what area or who to contact, we have again highlighted in this newsletter the reconstituted primary subcommittees of the executive board with their contact information. We are starting early to prepare for the 2008 Engineers Week Family Day event in mid-February 2008. Perhaps you possess or have an idea for an interesting display that can engage, thrill, and or provide hands-on experiences for 6-13 year olds, and perhaps older; or you are or know of industry and other sponsors who can provide give-away material to be provided to visitors to our display - items such as or similar to pens, key chains, fancy and informative brochures, try-at-home ideas/packages, etc. Then again you may have just the idea for a much-needed professional development activity having an adequate market for our area... we desire and welcome your input and active participation.

October Event

You may have already received our email broadcast of our October event: a presentation by Dr. Michael Reischman on Government Relations at ASME - Mechanisms and Impact. As Vice President - Government Relations, Dr. Reischman is in a vantage position to expound on this important area of ASME activity that may not be well known or understood by many of us. The venue for the meeting is excellent, as attendees to our awards banquet this year would attest. If you have not already made your reservations, you should do so quickly as space is limited.

Executive Committee Meets

The October executive committee meeting has been scheduled for 3rd October 2007 in the large conference room at the Washington DC ASME office, 9th floor, 1828 L Street, NW, Washington, DC 20036. If you would like to attend this, or any future meeting, you are most welcome. Let us know your intention by email to eroninii1@asme.org

Cheers,

Iheanyi Eronini

LEARN MORE, EARN MORE IT'S THAT SIMPLE!

- Is your job market becoming saturated?
- Do you need a promotion or raise?
- Do you see career growth in what you are doing now?
- Are you the only engineer in your company without an advanced degree?
- Would you be marketable in a job search?

Program Options

Aerospace Engineering
Chemical Engineering
Civil & Environmental Engineering
Electrical & Computer Engineering
Energetic Concepts
Environmental Engineering
Fire Protection Engineering
Materials Science & Engineering
Mechanical Engineering
Nuclear Engineering
Project Management
Reliability Engineering
Software Engineering
Systems Engineering

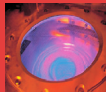
The A. James Clark School of Engineering is the highest-ranked engineering graduate school in the region and ranked No. 16 in the nation by *U.S. News & World Report*. With those credentials, it's the perfect choice for advancing your career and keeping you current with the latest technological developments in your field or in transferring to a new area of expertise.

Master of Engineering (30-credits)
Graduate Certificate in Engineering (12-credits)
Custom Short Courses, Workshops, License Reviews

Apply Today: No GRE EXAMS
NO THESIS TO COMPLETE DEGREE
NO QUALIFYING EXAMS
CLASSES OFFERED TO ACCOMMODATE
THE WORKING PROFESSIONAL

Contact Us: 301-405-0362, ENPM-C@UMD.EDU
WWW.ENPM.EDU

Class Locations:
College Park campus, remote sites in Maryland, On-Line,
or ask us about classes at your workplace



A. JAMES CLARK
SCHOOL OF ENGINEERING

OFFICE OF ADVANCED
ENGINEERING EDUCATION

You can advertise in this newsletter!

one time/alternate months/every issue*

Full page	-	\$400/\$1500/\$2700
Half page	-	\$250/\$1000/\$1800
Quarter page	-	\$150/\$500/\$900
Business-Card size	-	\$85/\$275/\$500

*50% discount on 'New Position Open' ads

Early Career Engineer Essay Competition

The Old Guard Committee of ASME invites you to participate in an Early Career Engineer Essay Competition. The competition was developed to engage early career engineers in communicating advice and guidance based on your own personal/professional experiences and your relationship with ASME to new ME/MET graduates. The winning essay will be posted on the ASME Early Career website and the author will receive \$1,000 and a lifetime ASME membership.

For complete details visit:

http://www.asme.org/Communities/EarlyCareer/Old_Guard_Early_Career.cfm

~ Dinner Meeting - continued from page 1 ~

Dessert and coffee (regular and decaffeinated)

Program: ASME's government relations are directed at affecting the outcome of issues identified by members as important to the practice of mechanical engineering in the public interest. ASME members and staff use a variety of programs and forums for informing, assisting and influencing public policy deliberations. This presentation will outline government relations activities at ASME and the opportunities for member participation.

Speaker: Michael M. Reischman is Deputy Assistant Director of the Engineering Directorate, National Science Foundation. He has had a long and distinguished career in academia and government. Dr. Reischman is an ASME Fellow and a recipient of the Dedicated Service Award. His Ph.D. is from Oklahoma State University.

Advancing Your Career With ASME PPC

The ASME Professional Practice Curriculum (PPC) is an online resource designed to help you advance in the engineering profession by providing guidance and resources on subjects that complement an engineers technical skills.

The PPC consists of 42 modules on topics ranging from product development and writing cost proposals to team building and negotiation. The PPC also provides information on alternative engineering career paths such as patent law, marketing and sales, and entrepreneurship.

To get started, please visit
www.professionalpractice.asme.org.

Nominate an Engineer for the 2008 Old Guard Early Career Engineer Award!

Recognize an outstanding early career engineer who actively involves themselves in the engineering profession, their communities, and the work of ASME. Submit your nominations today!

Visit
<http://files.asme.org/asmearg/Communities/EarlyCareer/8026.pdf> for more details.

ASME Web Site Now Translates in Spanish and Chinese

In continued efforts to serve its growing international membership and forge an online presence consistent with new global initiatives, ASME has launched two language translation enhancements on its Web site, **ASME.ORG**

The ASME Web site can now be translated into the Spanish and Chinese languages, in addition to English. Spanish and Chinese-speaking visitors can now receive their respective language translations by clicking on the national flag of either Spain or China located at the top right side of the homepage.

“The new auto translator on the ASME Web site supports the Society's outreach and commitment to the international engineering community, which is a key to expanding our initiatives aimed at global markets,” said Sam Y. Zamrik, president of ASME. “We will be adding other language translations including French, Russian, Japanese and Arabic as ASME develops the Web site to better serve its global members and customers.”

ASME.ORG provides portals to an array of engineering knowledge, including information on technical publications, conferences, codes and standards, continuing education opportunities and other programs of value to the engineering and technology community.



A four-day career enhancement program for early-career engineers, Nov. 9–12, 2007 Seattle Sheraton, Seattle, Washington *(held in conjunction with the ASME International Mechanical Engineering Congress & Exposition)*

Nov. 9: Innovation Showcase

Become inspired at the I-Show, where 10 top collegiate student teams present their technological innovations to a judging panel of successful innovators, industry experts, venture capitalists, and intellectual property specialists for the ultimate reward: industry recognition and seed funds to move onto the next step in commercialization.

http://www.asme.org/Governance/StrategicManagement/Initiatives/Innovation_Showcase_IShow.cfm

Nov. 10: Invention to Venture Workshop

Designed for the science, engineering, and technology communities, the 'I2V' is a one-day "entrepreneurship boot camp" that teaches technology entrepreneurship basics, helps build networks, and provides a framework for moving ideas forward. Topics include idea validation, intellectual property management, marketing, building the team, creating a business plan, and financing your idea.

http://www.asme.org/Governance/StrategicManagement/Initiatives/Invention_2_Venture_Workshop.cfm

Nov. 11: Early Career Forum & Fair

The Early Career Forum & Fair provides an outstanding opportunity to learn the skills necessary to get on the fast track of your engineering career. Industry experts offer key advice on how to advance in both technical and management areas. You have the opportunity to ask specific questions about your career goals.

http://www.asme.org/Communities/EarlyCareer/Forum/Seattle_ECF_Fair_Program.cfm

Nov. 12: Early Career Development Series

The Early Career Development Series (ECDS) offers five dynamic sessions covering an array of engineering topics. The 2007 ECDS will focus on such pivotal topics as alternative energies, patents and intellectual property, aerospace design, engineering entrepreneurship, and government funding for engineering research.

http://www.asme.org/Communities/EarlyCareer/Early_Career_Development.cfm

For complete details, updates, and to register for the Early Career Forum & Fair and other early career programs, visit

http://www.asme.org/Communities/EarlyCareer/Forum/Seattle_ECF_Fair_Program.cfm.

Made a Difference in Engineering Education?

Do you know an individual or entity (e.g. company, organization, institution, etc.) that has contributed to engineering education in a significant way? If so, consider nominating them for one of the following society awards:

The **Frank von Flue Award**, established in 2002, recognizes significant contributions by an individual or a group to the promotion of lifelong learning for mechanical engineers. Lifelong learning is defined as the continued process of education and/or professional development, following a post-secondary education degree, to maintain the competence and flexibility of mechanical engineers throughout their career. Contributions may include assessment, development, distribution or promotion of materials for lifelong learning via appropriate mechanisms, such as professional development or university extension courses and programmed or self-paced learning.

The **Ben C. Sparks Medal**, established in 1990, is presented annually to a mechanical engineer for recognition of eminent service to mechanical engineering technology education through contributions toward ASME; towards higher education professional service; and towards the teaching and/or research faculty roles in mechanical engineering and mechanical engineering technology. Candidates must have a record of outstanding performance in all of three areas: a broad range of contributions to ASME; dedicated efforts and a record of achievements in the advancement of engineering education and engineering technology education; and contributions, over an extended period of time, to the positive support, recognition, or interaction of mechanical engineering technology and mechanical engineering programs, their faculties, or students.

The deadline for submitting nominations is Jan. 1, 2008. For more information and a nomination package, please visit: <http://www.asme.org/Governance/Honors/SocietyAwards/>