



# Washington DC Section

## Newsletter

### October 2007



**Editor:** Geoffrey Smith  
202-404-6324  
geoffrey.smith@nrl.navy.mil

<http://www.isr.umd.edu/~jwh2/asme/>

**Executive Secretary:** Andrea Gironda  
703-489-9503  
agironda@verizon.net

<u>Chairman</u>	<u>Vice-Chairman</u>	<u>Treasurer</u>	<u>Secretary</u>	<u>Executive Advisor</u>
I. Eronini 443-885-3868 eronini@eng.morgan.edu	Rattan Tawney 301-228-8820 rtawney@bechtel.com	Boris Ciorneiu 703-541-2626 boris.ciorneiu@metris.com	Mohsen Mosleh 202-806-6622 mmosleh@howard.edu	Gurmukh D. Mehta 703-414-3882 gurmukh.d.mehta@saic.com

### ASME Washington, DC Section Tour

#### Visit at Metris USA Inc. Thursday, November 15th

**Date:** Thursday, Nov. 15, 2007

**Time:** 6:00 - 6:30 p.m. - Arrival

6:30 - 7:30 p.m. - Tour of the Newington Facility

7:30 - 8:00 p.m. - Presentation of Metris Company, discussion, followed by Snack Bar

**Location:** Metris USA, Inc., 8500 Cinder Bed Rd., Suite 150, Newington (Lorton), Virginia 22122, USA

**Cost:** FREE

**RSVP:** For registration, please contact ASME Washington, DC Section Executive Secretary, Andrea Gironda, by phone (703) 489 9503 or e-mail [agironda@verizon.net](mailto:agironda@verizon.net) COB, Thursday, November 13, 2007. Questions about the process can be directed to Boris Ciorneiu via email at [boris.ciorneiu@metris.com](mailto:boris.ciorneiu@metris.com) or [ciorneiu@netzero.com](mailto:ciorneiu@netzero.com)

**About Metris:** Metris designs, develops and markets a unique range of 3D hardware and software inspection systems for design and manufacturing industries. The company's reliable and innovative metrology solutions cover the full range of measurement volumes required by automotive and aerospace customers, in both fixed and portable configurations and with optical and touch sensors.

The main production of Metris Virginia locations (Newington and Dulles) is based on Metris Laser Radar and Metris iGPS (infrared Global Position System). The Metris Laser Radar is the top solution available to the manufacturing industry that provides a fully automated, non-contact measurement and inspection capability for large-volume applications of up to 60 meters. The Metris iGPS is a modular, large volume

~ continued on page 3 ~

### ASME Offers Members Chance to have their Voices Heard During the CNN/YouTube Sponsored Presidential Debate on Nov. 25th, 2007

On Sunday, Nov. 11, as part of the International Mechanical Engineering Congress & Exposition (IMECE) the Government Relations Department of ASME will be providing members with the opportunity to register online with YouTube in order to formulate questions to ask the Presidential candidates as they debate policy issues live on CNN as part of "You Choose '08." This unique opportunity will allow ASME have their voice heard in front of the nation and possibly drive discussion as the U.S. prepares to elect a new President. The debate is formatted so that candidates answer videotaped questions from people.

This idea was originally conceived after ASME Member and former Washington Internships for Students of Engineering (WISE) intern Chris Deal decided to videotape a question for this debate related to global climate change and the possible policy implications of this issue. To view Deal's video please visit <http://www.youtube.com/watch?v=qTr2rQzoACI> For more examples, please visit <http://www.youtube.com/youchoose>.

For submission guidelines or to create a YouTube account, visit: [www.youtube.com](http://www.youtube.com).

Questions are due by Sunday, Nov. 25, and you will be submitting your video as an individual, facilitated but not necessarily endorsed by ASME. Members who choose to submit questions are encouraged, but not required, to ask questions pertinent to the interests of ASME and those of mechanical engineers at large.

## Changing the Face of Engineering: Diversity Action Grant Applications Now Being Accepted

Do you know of a Student Section doing some good work? Diversity Action Grant (DAG) applications are now being accepted from ASME student sections for the 2007-08 academic year. Student Sections located outside the United States, or collaborative projects with international partners, are strongly urged to apply.

The DAG Program, supported by the Center for Leadership and Diversity, is a competitive program which awards grants ranging from \$500 to \$1,500 to ASME Student Sections to sponsor events that:

- Promote the inclusion of women and under-represented minorities in ASME Student Sections and in mechanical engineering;
- Inspire K-12 students to excel in science, technology, engineering, and mathematics (STEM) education; and,
- Assist minority- and women-owned businesses in solving engineering design problems.

In addition, applications should promote collaboration with other organizations on campus or within the community, cost sharing of associated expenses, and a method for measuring the success of the project.

**DEADLINE:** Nov. 1. Apply Today!

[www.asme.org/Communities/Diversity/Diversity\\_Action\\_Grant.cfm](http://www.asme.org/Communities/Diversity/Diversity_Action_Grant.cfm), or contact Marina Stenos at [stenosm@asme.org](mailto:stenosm@asme.org).

The **ASME Volunteer Opportunities Bulletin Board (VOBB)** is a tool designed to help volunteer leaders promote local Section and Society-wide volunteer positions. It is also used to help link volunteers with opportunities for involvement in all areas of the society. Opportunities for involvement include standards development, pre-college outreach and educational activities, government relations, and the development of new products, programs and more.

Volunteer leaders are encouraged to use the VOBB as a recruitment tool. If your ASME group is looking for a few good volunteers to share their passion and make meaningful contributions, contact Deidra Hackley at [hackleyd@asme.org](mailto:hackleyd@asme.org) or visit [http://volunteer.asme.org/vobb/Post\\_Volunteer\\_Opportunity.cfm](http://volunteer.asme.org/vobb/Post_Volunteer_Opportunity.cfm). For more information on posting or applying for a position on the VOBB visit <http://volunteer.asme.org/> or e-mail [bookert@asme.org](mailto:bookert@asme.org).

# LEARN MORE, EARN MORE IT'S THAT SIMPLE!

- Is your job market becoming saturated?
- Do you need a promotion or raise?
- Do you see career growth in what you are doing now?
- Are you the only engineer in your company without an advanced degree?
- Would you be marketable in a job search?

The A. James Clark School of Engineering is the highest-ranked engineering graduate school in the region and ranked No. 16 in the nation by *U.S. News & World Report*. With those credentials, it's the perfect choice for advancing your career and keeping you current with the latest technological developments in your field or in transferring to a new area of expertise.

Master of Engineering (30-credits)  
Graduate Certificate in Engineering (12-credits)  
Custom Short Courses, Workshops, License Reviews

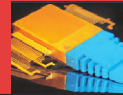
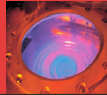
#### Program Options

Aerospace Engineering  
Chemical Engineering  
Civil & Environmental Engineering  
Electrical & Computer Engineering  
Energetic Concepts  
Environmental Engineering  
Fire Protection Engineering  
Materials Science & Engineering  
Mechanical Engineering  
Nuclear Engineering  
Project Management  
Reliability Engineering  
Software Engineering  
Systems Engineering

Apply Today: No GRE EXAMS  
NO THESIS TO COMPLETE DEGREE  
NO QUALIFYING EXAMS  
CLASSES OFFERED TO ACCOMMODATE  
THE WORKING PROFESSIONAL

Contact Us: 301-405-0362, ENPM-C@UMD.EDU  
[WWW.ENPM.EDU](http://WWW.ENPM.EDU)

Class Locations:  
College Park campus, remote sites in Maryland, On-Line,  
or ask us about classes at your workplace



A. JAMES CLARK  
SCHOOL OF ENGINEERING

OFFICE OF ADVANCED  
ENGINEERING EDUCATION

### *You can advertise in this newsletter!*

one time/alternate months/every issue\*

<b>Full page</b>	-	\$400/\$1500/\$2700
<b>Half page</b>	-	\$250/\$1000/\$1800
<b>Quarter page</b>	-	\$150/\$500/\$900
<b>Business-Card size</b>	-	\$85/\$275/\$500

*\*50% discount on 'New Position Open' ads*

### Early Career Engineer Essay Competition

The Old Guard Committee of ASME invites you to participate in an Early Career Engineer Essay Competition. The competition was developed to engage early career engineers in communicating advice and guidance based on your own personal/professional experiences and your relationship with ASME to new ME/MET graduates. The winning essay will be posted on the ASME Early Career website and the author will receive \$1,000 and a lifetime ASME membership.

For complete details visit:

[http://www.asme.org/Communities/EarlyCareer/Old\\_Guard\\_Early\\_Career.cfm](http://www.asme.org/Communities/EarlyCareer/Old_Guard_Early_Career.cfm)

~ *Metris, continued from page 1* ~

tracking system enabling factory-wide localization of multiple objects with metrology accuracy, applicable in manufacturing and assembly.

**Driving Directions:**

From Washington DC

Keep straight on I-395 South 10.8 mi entering Virginia.  
Keep straight onto I-95 South 2.9 mi.  
At exit 166A, take ramp right for SR-7100 South / Fairfax County Pkwy toward Newington / Fort Belvoir 1.0 mi.  
Turn left onto Backlick Rd 0.2 mi.  
Turn right onto Cinder Bed Rd 0.1 mi.  
Arrive at 8500 Cinderbed rd, Lorton, VA 22122.

From Baltimore, MD

Take I-295 South towards Washington. At exit 1C, take ramp right for I-95 South / I-495 South / I-495 Innerloop / Capital Beltway toward Richmond. Take ramp left for I-95 South toward Richmond 4.9 mi. At exit 166A, take ramp right for SR-7100 South / Fairfax County Pkwy toward Newington / Fort Belvoir 1.0 mi. Turn left onto Backlick Rd 0.2 mi. Turn right onto Cinder Bed Rd 0.1 mi. Arrive at 8500 Cinderbed Rd, Lorton, VA 22122

From Tyson's Corner, VA

Take SR-123 North / Chain Bridge Rd to ramp for I-495 South / I-495 Outerloop / Capital Beltway toward Richmond / Alexandria. At exit 57A, take ramp right for I-395 South toward Richmond 1.6 mi. Keep straight onto I-95 South 2.9 mi. At exit 166A, take ramp right for SR-7100 South / Fairfax County Pkwy toward Newington / Fort Belvoir 1.0 mi. Turn left onto Backlick Rd 0.2 mi. Turn right onto Cinder Bed Rd 0.1 mi. Arrive at 8500 Cinderbed Rd, Lorton, VA 22122

**ASME Web Site Now Translates  
in Spanish and Chinese**

In continued efforts to serve its growing international membership and forge an online presence consistent with new global initiatives, ASME has launched two language translation enhancements on its Web site, **ASME.ORG**

The ASME Web site can now be translated into the Spanish and Chinese languages, in addition to English. Spanish and Chinese-speaking visitors can now receive their respective language translations by clicking on the national flag of either Spain or China located at the top right side of the homepage.

“The new auto translator on the ASME Web site supports the Society’s outreach and commitment to the international engineering community, which is a key to expanding our initiatives aimed at global markets,” said Sam Y. Zamrik, president of ASME. “We will be adding other language translations including French, Russian, Japanese and Arabic as ASME develops the Web site to better serve its global members and customers.”

**ASME.ORG** provides portals to an array of engineering knowledge, including information on technical publications, conferences, codes and standards, continuing education opportunities and other programs of value to the engineering and technology community.



# Washington DC Section Operating Budget

Past Year Summary and This Year's Plan  
Program Year: July 1, 2006 - June 30, 2007

	Budgeted	PAST YEAR Actual	Variance*	THIS YEAR Estimate
<b>Telephone</b>				
Section Administration	\$400	\$464	(\$64)	\$350
Other				
<b>Subtotal</b>	<b>\$400</b>	<b>\$464</b>	<b>(\$64)</b>	<b>\$350</b>
<b>Postage &amp; Mailing Expenses</b>		(Postage in telephone)		
Section Administration				
Newsletters/Meeting Notices	\$100		\$100	\$100
Other				
<b>Subtotal</b>	<b>\$100</b>		<b>\$100</b>	<b>\$100</b>
<b>Stationary &amp; Supplies</b>		(Supplies in telephone)		
Section Administration	\$100		\$100	\$100
Other Secretary's Salary	\$2,400	\$2,400		\$2,400
<b>Subtotal</b>	<b>\$2,500</b>	<b>\$2,400</b>	<b>\$100</b>	<b>\$2,500</b>
<b>Program/Meeting Expenses</b>				
Executive Committee				
Program Committee				
Programs & Events	\$2,000	\$2,637	(\$637)	\$3,250
Awards				\$150
Meal Payments				
Professional Development/Seminars				
Speaker/Meeting Expenses				
Other Conference Meeting	\$500	\$861	(\$361)	\$1,000
<b>Subtotal</b>	<b>\$2,500</b>	<b>\$3,498</b>	<b>(\$998)</b>	<b>\$4,400</b>
<b>Printed Matter/Reproduction</b>				
Section Administration				
Newsletters/Meeting Notices				
Other				
<b>Subtotal</b>				
<b>Student Section Assistance</b>				
Student Aid				
Student Awards/Scholarships		\$3,200	(\$3,200)	\$5,000
Other Science Fairs	\$1,000	\$550	\$450	\$1,000
<b>Subtotal</b>	<b>\$1,000</b>	<b>\$3,750</b>	<b>(\$2,750)</b>	<b>\$6,000</b>
<b>Miscellaneous</b>				
Payments to Local Engineering Org.		\$150	(\$150)	\$250
Other	\$500		\$500	
Other Gift				
Other DCCEAS		\$361	(\$361)	\$300
<b>Subtotal</b>	<b>\$500</b>	<b>\$511</b>	<b>(\$11)</b>	<b>\$550</b>
<b>Total Expenditures</b>	<b>\$7,000</b>	<b>\$10,623</b>	<b>(\$3,623)</b>	<b>\$13,900</b>
<b>Revenue</b>				
Allocation	\$4,680	\$8,093	(\$3,413)	\$10,000
Interest	\$20	\$34	(\$14)	\$40
Professional Development				
Programs/Events		\$932	(\$932)	\$1,000
Advertising	\$2,700	\$1,800	\$900	\$2,000
Other ASME XR3		\$1,500	(\$1,500)	
Other Industry Sponsorship	\$500	\$500		\$860
Other				
<b>Total Revenue</b>	<b>\$7,900</b>	<b>\$12,859</b>	<b>(\$4,959)</b>	<b>\$13,900</b>

<b>REGION NUMBER</b>	<b>District A</b>	<b>SECTION CODE:</b>
<b>SECTION NAME:</b>	<b>ASME Washington DC</b>	
If appropriate, please indicate:		
<input type="checkbox"/> Subsection	<input type="checkbox"/> Group	<input type="checkbox"/> Tech. Chapter
<b>Sub-unit name:</b>		

Annual section allotments are determined by a formula approved by the Knowledge & Community Sector at the beginning of each fiscal year.  
\*Variance equals the difference between the Budgeted and Actual amounts for the previous year



## ANNUAL FINANCIAL REPORT

Program Year: July 1, 2006 to June 30, 2007

Revenue		Assets as of July 1, 2006	
Allocation	\$8,093.00	Bank balance	\$8,163.98
Interest	\$34.00	other account (savings)	\$1,297.79
Professional Development		other account (investment)	\$8,888.37
Program/Events	\$932.00	Other cash	
Advertising	\$1,800.00	<b>Total assets as of July 1, 2006</b>	\$18,350.14
Other 1. ASME XR3 Support	\$1,500.00		
2. Industry Sponsorship	\$500.00	<b>Current Fiscal Year Revenue</b>	\$12,859.00
3.		<b>Current Fiscal Year Expenditures</b>	\$10,622.98
<b>Subtotal</b>	<b>\$12,859.00</b>	<b>Surplus/Deficit</b>	<b>\$2,236.02</b>
		<b>Current Assets*</b>	<b>\$20,586.16</b>
<b>Expenditures</b>		<b>Assets as of June 30, 2007</b>	
Telephone (+Postage+Supplies)	\$464.00	Current Bank Balance	\$10,400.04
Postage		other account (Savings)	\$1,303.63
Section Secretary	\$2,400.00	<b>other account (Investment, as of 03/31/07)</b>	<b>\$9,965.96</b>
Program/Meeting Expenses	\$3,497.98	Other cash	
Printed Matter/Reproduction		<b>TOTAL ASSETS AS OF JUNE 30, 2007</b>	<b>\$21,669.63</b>
Student Section Assistance	\$3,750.00		
Miscellaneous	\$511.00		
<b>Subtotal</b>	<b>\$10,622.98</b>		

\*If Current Assets does not equal Total Assets as of June 30, 2007, please explain  
 Difference is in savings account interest, and dividends and share price fluctuations in Investment Account. Note that the investment account current balance indicated is as of 03/31/07, as per available record at time of report, and not as of 06/30/2007.

TREASURER SIGNATURE (& E-MAIL ADDRESS)  SUB-UNIT  Subsection Boris C  Group  Tech. Chapter

AUDITOR SIGNATURES (& E-MAIL ADDRESSES) \_\_\_\_\_  
 Original signed by Howard Berkof  
 \_\_\_\_\_  
 Original signed by M.A. Siddiq Qidwai

## Committees Chair & Alternate

Committee Description	Lead and Alternate Lead	Lead Contact Address
<b>Nominations</b>	Gurmukh Mehta Horace Whitworth	<a href="mailto:Gurmukh.d.Mehta@saic.com">Gurmukh.d.Mehta@saic.com</a> <a href="mailto:hwhitworth@fac.howard.edu">hwhitworth@fac.howard.edu</a>
<b>Auditing</b>	Howard Berkof Siddiq Qidwai	<a href="mailto:berkofh@asme.org">berkofh@asme.org</a> <a href="mailto:muhammad.a.qidwai@saic.com">muhammad.a.qidwai@saic.com</a>
<b>Program</b>	Rafael Mandujano Stanley Halperson	<a href="mailto:mandujanora@yahoo.com">mandujanora@yahoo.com</a> <a href="mailto:s.halperson@comcast.net">s.halperson@comcast.net</a>
<b>Finance and Revenue</b>	Boris Ciorneiu Siddiq Qidwai	<a href="mailto:Boris.Ciorneiu@metris.com">Boris.Ciorneiu@metris.com</a> <a href="mailto:muhammad.a.qidwai@saic.com">muhammad.a.qidwai@saic.com</a>
<b>Membership Development</b>	Thomas Beutner Stanley Halperson	<a href="mailto:thomas.beutner@darpa.mil">thomas.beutner@darpa.mil</a> <a href="mailto:s.halperson@comcast.net">s.halperson@comcast.net</a>
<b>Professional Development</b>	Siddiq Qidwai Thomas Beutner	<a href="mailto:muhammad.a.qidwai@saic.com">muhammad.a.qidwai@saic.com</a> <a href="mailto:thomas.beutner@darpa.mil">thomas.beutner@darpa.mil</a>
<b>Industrial and Government Relations</b>	Howard Berkof Ronald Rolfe	<a href="mailto:berkofh@asme.org">berkofh@asme.org</a> <a href="mailto:Venturifx@aol.com">Venturifx@aol.com</a>
<b>K-12 and College Relations</b>	Rattan Tawney Mohsen Mosleh	<a href="mailto:rtawney@bechtel.com">rtawney@bechtel.com</a> <a href="mailto:mmosleh@howard.edu">mmosleh@howard.edu</a>
<b>Honors, Awards and Public Relations</b>	Stanley Halperson Horace Whitworth	<a href="mailto:s.Halperson@comcast.net">s.Halperson@comcast.net</a> <a href="mailto:hwhitworth@fac.howard.edu">hwhitworth@fac.howard.edu</a>