



Washington DC Section Newsletter May 2007



Editor: Geoffrey Smith
202-404-6324
geoffrey.smith@nrl.navy.mil

<http://www.isr.umd.edu/~jwh2/asme/>

Executive Secretary: Andrea Gironda
703-489-9503
agironda@verizon.net

<u>Chairman</u>	<u>Vice-Chairman</u>	<u>Treasurer</u>	<u>Secretary</u>	<u>Executive Advisor</u>
I. Eronini 443-885-3868 eronini@eng.morgan.edu	Rattan Tawney 301-228-8820 rtawney@bechtel.com	Charles Akula 301-228-7278 cakula@bechtel.com	Mohsen Mosleh 202-806-6622 mmosleh@howard.edu	Gurmukh D. Mehta 703-414-3882 gurmukh.d.mehta@saic.com

ASME Washington DC Section Family Picnic!

At the 9th Annual International Submarine Races

Date: Friday, June 29th, 2007

Time: 9:00 am - 2:00 pm

Place: Naval Surface Warfare Center's Carderock Division
David Taylor Model Basin in Bethesda, Maryland
and the Carderock Recreation Area

Cost: FREE (RSVP required)

RSVP: The event is on a Navy base, so there's a procedure to follow. Anyone can attend as long as security forms are submitted in advance for security purposes. Note the restrictions on cameras and camera cell phones which are not permitted without advance authorization.

- 1) Go to <http://www.isrsubrace.org/contestant7info.htm>
- 2) Download, print, and fill out forms 5.2 and 5.5, a liability release and visit request.
[http://www.isrsubrace.org/9th%20ISRWaiver%20Form%20\(5.2\).pdf](http://www.isrsubrace.org/9th%20ISRWaiver%20Form%20(5.2).pdf)
[http://www.isrsubrace.org/SubRace%20\(5.5\).pdf](http://www.isrsubrace.org/SubRace%20(5.5).pdf)
- 3) Mail forms before June 11th to:

Jack Nicewinter
312 North Scott Avenue
Glenolden, PA 19036

Note: Foreign nationals should submit forms ASAP to ensure entry.

- 4) Contact ASME Washington DC Section Executive Secretary, Andrea Gironda, by Phone: (703) 489-9503 or Email: agironda@verizon.net by June 11th with the names of everyone attending and whether they are a US citizen. Providing ages for kids coming along will help us focus the tour.

~ continued on page 3 ~

Report on ASME Washington DC Section Awards Dinner, May 02, 2007

All who attended the May 02, 2007 awards banquet at Mykonos Grill in Rockville, Maryland had a great time. The food and service were considered very good, as were the mini presentations by the award winning students from the 2007 regional science fairs.

Among the attending representatives of our science fair sponsor, Metris USA, was Filip Geuens, Vice-President Hardware Engineering (back row, second from right), who was visiting from Belgium.



Three recipients of the 2007 ASME Washington DC Section Scholarship were on hand to receive their awards in the amount of \$800.

All four ASME Washington DC Section Scholarship recipients for 2007 and their brief bios are as follows:

Alan Van Epps: Student at The Catholic University of America 2002 to 2007, pursuing a Bachelor degree in Mechanical Engineering. ASME member (2005) and Student President of the CUA chapter from 2006 to 2007. He has worked on Constantino Brumidi's fresco restoration of the U.S. Capitol Building,



~ continued on page 2 ~

~ continued from page 1 ~

using laser vibrometry techniques to locate internal separation. Alan is planning to attend graduate school for a Masters of Mechanical Engineering after graduation. He was raised in Easton, Massachusetts and attended Oliver Ames High School from 1997-2002. He achieved Eagle Scout status from The Boy Scouts of America (2001).



Myron Douglas: In his second year of studies in Mechanical Engineering at the University of the District of Columbia, he excels in both academic work and in Athletics, being on the Dean's list as well as the captain of the university's soccer team. Born in Trinidad and Tobago and a resident of the District of Columbia for two years, Myron describes himself as vibrant and determined



Alexandra Krupnik: A fourth year student at The George Washington University enrolled in a dual degree program for a B.S. degree in Mechanical Engineering and a B.A. degree in Spanish Language and Literature.

She has been a member of George Washington's ASME for four years, and held leadership positions including the Social Event Chair and, most recently, the President. She is also the inaugural President and cofounder of the Society of Women Engineers' student section at GWU. An avid runner in her spare time, Alexandra ran for George Washington's cross country and track team for two years. She also enjoys reading.

Theomar Milford: May 2007 graduate of the Department Mechanical Engineering, Howard University. A member of Tau Beta Pi Engineering Honor Society, and National Society of Black Engineers, he was this year's corresponding secretary of the American Society of

LEARN MORE, EARN MORE IT'S THAT SIMPLE!

- Is your job market becoming saturated?
- Do you need a promotion or raise?
- Do you see career growth in what you are doing now?
- Are you the only engineer in your company without an advanced degree?
- Would you be marketable in a job search?

The A. James Clark School of Engineering is the highest-ranked engineering graduate school in the region and ranked No. 16 in the nation by *U.S. News & World Report*. With those credentials, it's the perfect choice for advancing your career and keeping you current with the latest technological developments in your field or in transferring to a new area of expertise.

Master of Engineering (30-credits)
Graduate Certificate in Engineering (12-credits)
Custom Short Courses, Workshops, License Reviews

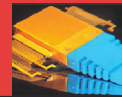
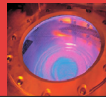
Program Options

Aerospace Engineering
Chemical Engineering
Civil & Environmental Engineering
Electrical & Computer Engineering
Energetic Concepts
Environmental Engineering
Fire Protection Engineering
Materials Science & Engineering
Mechanical Engineering
Nuclear Engineering
Project Management
Reliability Engineering
Software Engineering
Systems Engineering

Apply Today: No GRE EXAMS
NO THESIS TO COMPLETE DEGREE
NO QUALIFYING EXAMS
CLASSES OFFERED TO ACCOMMODATE
THE WORKING PROFESSIONAL

Contact Us: 301-405-0362, ENPM-C@UMD.EDU
WWW.ENPM.EDU

Class Locations:
College Park campus, remote sites in Maryland, On-Line,
or ask us about classes at your workplace



A. JAMES CLARK
SCHOOL OF ENGINEERING

OFFICE OF ADVANCED
ENGINEERING EDUCATION

You can advertise in this newsletter!

one time/alternate months/every issue*

Full page	-	\$400/\$1500/\$2700
Half page	-	\$250/\$1000/\$1800
Quarter page	-	\$150/\$500/\$900
Business-Card size	-	\$85/\$275/\$500

**50% discount on 'New Position Open' ads*

Mechanical Engineering HU student chapter. He has interned with Tompkins Builders Inc for two consecutive summers working in various capacities from on-site design issues to schedule support. With a passion for the development and guidance of young minds, he has also served as an intern at the Howard University Middle School of Mathematics and Science.



~ continued from page 1 ~

Any Questions about the process can be directed to Rafael Mandujano via email at mandujanora@yahoo.com.

Program: Bring your families to the 9th International Submarine Races, where 23 university and independent teams compete for the world speed record in human-powered submarines. The races are held in the 3,200 ft long David Taylor Model Basin at the Naval Surface Warfare Center, Carderock. Every year, the teams gather here to don their scuba gear, get in their vehicles, and race. The two person speed record, set in 2005 by the University of Quebec, stands at 7.061 knots. This year will see the addition of tandem races and 3D slalom courses to make the challenge even greater.

We'll plan to meet on base. We'll be shown around the competition area and be able to meet the contestants prepping their vehicles outside in the parking lot. The first ever slalom races will be ongoing throughout the day and can be watched from the water's edge and via the underwater cameras rigged for the event. We'll also get a chance to tour some of the other Navy test facilities on the base.

Lunch: At noon, we'll start heading over to the Carderock Park just off base for relaxation and a barbeque picnic by the river.

Checkout more info on the competition at www.isrsubrace.org!

Info on NSWC Carderock and tour information can be found at: http://www.dt.navy.mil/about_us/visitor_information/carderock_division_headquarters/carderock_division_headquarters.html

Important Safety Note: The Model Basin is a large open pool surrounded by lots of test equipment and machinery. We will be free to walk around somewhat informally, and supervision is not provided. Children under 6 are not permitted on the tour, but are welcome at the picnic.

Directions: Carderock is extremely easy to reach, and it is only 2 minutes from the Capital Beltway (I-495), Maryland Exit 41. **From Maryland,** take I-495 south toward Northern Virginia. Take Exit 41, (last exit in Maryland, prior to the bridge) toward Carderock. This will put you on westbound Clara Barton Parkway. **From Virginia,** take I-495 north toward Maryland. After passing the George Washington Parkway exit, get in the extreme right lane as you cross the American Legion Bridge into Maryland. This is an exit only lane for the Clara Barton Parkway (Exit 41). Caution: The exit ramp forks very soon after you exit. Take the left fork for Carderock. This will put you on westbound Clara Barton Parkway.

Once on Clara Barton Parkway, you may note that David Taylor Model Basin is on your right (the very long building). Take the first exit off the parkway, making a right into the main entrance to the base.

ASME Think Tank Summit to Address Today's Engineering Issues

Held in conjunction with the 2007 ASME Summer Annual Meeting in Toronto, Canada, the Society will conduct its first Think Tank Summit, June 10-11. The summit, held at the Fairmont Royal York Hotel, will address three issues critical to today's engineers. Panel sessions include "Fruits and Pitfalls of Product Lifecycle Management," which takes a look at the emerging importance of PLM and its impact on product development processes across the value chain to deliver the most business value. "Teaching Women Engineering, A Double Standard?" will look at the pros and cons of a recent report by the National Academies that suggests that colleges and universities are outmoded in their thinking of women in engineering, and "Human Factor Engineering, Designing for the User" will ask the question: Are all products designed with the consumer (human factor) in mind? Designers, critics and the audience will probe into this topic and also take a look at sample products that include the good, the bad, and the ugly. The ASME Think Tank Summit brings together leaders in industry, government, academia and ASME in three 90-minute town-hall-style discussions.

For more details and to registration visit the Web site at <http://www.asmeconferences.org/SAM07/ThinkTank.cfm> or email to klaskyp@asme.org



Student Activity Calendar

May

May 10-12 2007 Student Professional Dev. Conference District 1

May 14-17 Turbo Expo, Montréal, Quebec, Canada

June

June 9-14 Summer Annual Meeting (SAM), Toronto, Ontario, Canada

June 10-11 ASME Think Tank Summit

ASME President-Elect Honored for Service



Sam Y. Zamrik, Ph.D., president-elect of ASME and professor emeritus at Pennsylvania State University received the Penn State Engineering Society's (PSES) Distinguished Service Award.

Dr. Zamrik, who will become the 126th president of ASME in June 2007, was recognized for service to the Penn State Engineering Science and Mechanics (ESM) Department, for his service on the ESM Industrial and Professional Advisory Council, and for teaching and mentoring countless students and then providing them with guidance through their professional careers.

Professor Emeritus Zamrik and his wife founded the Sam Y. and Myrna R. Zamrik Scholarship for qualifying undergraduate students in the ESM Department. He is a regular participant in the College of Engineering's annual PSES golf tournament, which benefits the PSES Endowed Scholarships for promising Penn State engineering students. Now retired, Zamrik remains active in teaching courses as a volunteer and continues to serve on the ESM Industrial and Professional Advisory Council.

At a ceremony honoring Zamrik and other awards recipients, he was introduced as "an excellent ambassador for engineering science and mechanics."

As ASME president, Zamrik plans to reinforce the Society's work with engineering students, early-career engineers, and women and minorities so that ASME will continue to have programs that actively promote and expand participation by all these important member groups.

Upcoming Early Career Forums & Fairs

Toronto, Ontario, Canada - June 10, 2007 (At ASME Summer Annual Meeting)

Seattle, Washington – Nov. 11, 2007 (At ASME International Mechanical Engineering Congress & Exposition).

For more information on the Forums and Fairs, and important updates for US Citizens traveling to Canada, visit:

http://www.asme.org/Communities/EarlyCareer/Forum/Upcoming_Events.cfm

ASME To Hold Three Industry-Focused Conferences on Biotechnology

Leaders in the science and engineering communities will assess the latest technology in bioprocess engineering, biomechanics and medical devices and instrumentation at three ASME conferences in June 2007.

The ASME Bioprocess Technology Seminars and Exhibits will be held June 4-6, 2007, at the Radisson-Dublin St. Helens Hotel in Dublin Ireland. The second conference, *Frontiers in Biomedical Devices 2007*, is scheduled for June 7-8, at the Hyatt Regency Irvine in Irvine, Calif. The 2007 Summer Bioengineering Conference will take place June 20-24, at the Keystone Resort and Conference Center in Keystone, Colo.

The three conferences will examine the progress and future directions in biotechnology research, and provide practitioners with the latest tools and training to advance commercial applications in the field. ASME's objective in presenting the conferences is to provide the fast-growing biopharmaceutical industry with useful resources to solve technology challenges.

For more information, visit:

http://www.asme.org/Communities/Technical/BPE/Bioprocess_Activities.cfm

Nominate a Fellow Today!

The Fellow Grade recognizes significant engineering achievements and contributions to the engineering profession.

For additional information on ASME's **Fellows Program** visit:

<http://www.asme.org/Governance/Honors/Fellows/Fellows.cfm>



Sponsor of this year's Science Fair