



Washington DC Section

Newsletter

January 2007



Editor: Geoffrey Smith
202-404-6324
geoffrey.smith@nrl.navy.mil

<http://www.isr.umd.edu/~jwh2/asme/>

Executive Secretary: Andrea Gironda
703-489-9503
agironda12@comcast.net

<u>Chairman</u>	<u>Vice-Chairman</u>	<u>Treasurer</u>	<u>Secretary</u>	<u>Executive Advisor</u>
I. Eronini 443-885-3868 eronini@eng.morgan.edu	Rattan Tawney 301-228-8820 rtawney@bechtel.com	Charles Akula 301-228-7278 cakula@bechtel.com	Mohsen Mosleh 202-806-6622 mmosleh@howard.edu	Gurmukh D. Mehta 703-414-3882 gurmukh.d.mehta@saic.com

ASME DC Embassy Dinner - Feb. 15, 2007

An Evening at the Venezuelan Embassy

Date: Thursday, February 15, 2007

Time: 7:00 pm

Location: Venezuelan Embassy
Bolivarian Hall
2443 Massachusetts Ave. NW
Washington, DC.

Cost: \$25 per person

RSVP: by February 13, to the ASME Washington Section Executive Secretary, Andrea Gironda at (703) 489-9503 or via e-mail at agironda12@comcast.net.

Menu: Venezuelan dishes, house salad, Venezuelan snacks, cold dishes and desert. There will be open bar of whisky, red and white wine, Rum and soft drinks.

Program:

- 7:00 p.m. Open Bar
- 7:15 p.m. Welcoming words by the Ambassador
- 7:30 p.m. Presentation by Embassy's Counselors for Economy, Petroleum, and Culture.
- 8:00 p.m. Buffet Dinner

MESSAGE FROM THE CHAIR

In our first newsletter for 2007, may I wish you all a happy and prosperous New Year! We congratulate our vice-chair, Rattan Tawney, who was elected to fellow grade last year. The executive committee is grateful to all our members who volunteered their time and effort to bring about our programs in the past year or otherwise supported these programs by their participation and attendance. We are hopeful for your continued support this year. We welcome your feedback on these programs; advise on our plans, and suggestions on and active involvement in our future activities. Our goal remains to return significant value, at the local level, for our membership.

Two February Events

Featured in this newsletter are two events for February 2007. We are pleased to announce that our popular Embassy Dinner Meeting for this program year would be at the Venezuelan Embassy on the 15th of the Month Venezuela, which has been in the news lately, is a country of rich and deep cultural heritage that has extensive trade and technical relationships with the US, but intriguing personal or political relations at the highest levels. We expect a large turn out as usual so do not delay in securing your reservation for this meeting! Our other program for February is equally exciting: a display by our section at the National Building Museum in Washington, DC, on Family Day - Saturday, February 17, 2007 - as part of the Engineers Week celebrations. We hope you have planned to visit the museum with your family and partake of the many activities on

~ continued on page 2 ~

~ continued from page 1 ~

this day, and we invite you to stop by the ASME Washington DC stand. The section still welcomes gifts of small but useful items such as pens, key chains, magnets, calendars, glossy brochures and fact sheets, etc., which can be handed out to visitors to our display. These giveaways could spot your organization's logo or other identification.

Balance of Program Year

Our plan for the balance of the program year includes support of regional science and engineering fairs in the Metropolitan Washington DC Area during the March - May period (we welcome volunteers who would serve as our special awards judges); our annual ASME Washington Fellows dinner meeting; a Student Awards dinner meeting at which some of the science fair winners, our sponsors, and recipients of our Washington DC Section ASME Scholarships would be recognized (more industry and other sponsors are sought for these awards and the dinner); and a family-oriented event. We especially want this last activity to be spouse and family friendly and entertaining, and welcome your suggestions. Indeed I would like to set up a special committee to plan and realize this event and urge any of our interested members out there to get in touch with me. We continue to review and explore opportunities for a professional development event. Please keep the suggestions and ideas coming.

Cheers,

Iheanyi Eronini

Call for Nominations: 2007 Old Guard Early Career Engineer Award

Recognize an outstanding early career engineer actively involved in their profession, their communities, and the work of the Society. Submit Nominations Today!

Visit <http://files.asme.org/asmeorg/Communities/EarlyCareer/8026.pdf> for more details. *The deadline for all nominations is March 1, 2007.*

LEARN MORE, EARN MORE IT'S THAT SIMPLE!

- Is your job market becoming saturated?
- Do you need a promotion or raise?
- Do you see career growth in what you are doing now?
- Are you the only engineer in your company without an advanced degree?
- Would you be marketable in a job search?

Program Options

Aerospace Engineering
Chemical Engineering
Civil & Environmental Engineering
Electrical & Computer Engineering
Energetic Concepts
Environmental Engineering
Fire Protection Engineering
Materials Science & Engineering
Mechanical Engineering
Nuclear Engineering
Project Management
Reliability Engineering
Software Engineering
Systems Engineering

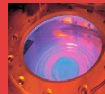
The A. James Clark School of Engineering is the highest-ranked engineering graduate school in the region and ranked No. 16 in the nation by *U.S. News & World Report*. With those credentials, it's the perfect choice for advancing your career and keeping you current with the latest technological developments in your field or in transferring to a new area of expertise.

Master of Engineering (30-credits)
Graduate Certificate in Engineering (12-credits)
Custom Short Courses, Workshops, License Reviews

Apply Today: No GRE EXAMS
NO THESIS TO COMPLETE DEGREE
NO QUALIFYING EXAMS
CLASSES OFFERED TO ACCOMMODATE
THE WORKING PROFESSIONAL

Contact Us: 301-405-0362, ENPM-C@UMD.EDU
WWW.ENPM.EDU

Class Locations:
College Park campus, remote sites in Maryland, On-Line,
or ask us about classes at your workplace



A. JAMES CLARK
SCHOOL OF ENGINEERING

OFFICE OF ADVANCED
ENGINEERING EDUCATION

ASME Wants You To Become An ASME Leader!

ASME is looking for bright, energetic Early Career Engineers interested in volunteering their time for the engineering profession. Selected applicants will be funded* to attend the Leadership Training Conference from March 2-4, 2007 at the Wyndham Greenspoint Hotel in Houston, Texas.

At the conference, gain insight into ASME's organization, activities, and resources, learn what it takes to lead or start an ASME unit, and network with more than 150 other ASME leaders.

To apply, email your application to EarlyCareerEngineers@asme.org with the subject: "Application for EC Delegate to LTC-07." The application deadline is Jan. 19. If selected, you will be notified by Jan. 31.

For more information on the conference, go to <http://www.asmeconferences.org/ltc07/>

*In accordance with ASME's Volunteer Travel Policy, ASME will pay 100% of your travel costs and up to \$100 per day for your hotel and per diem. The Wyndham is \$94 per night plus tax. ASME asks that you pay a \$75 registration fee to cover your meals while at the conference.

NATIONAL BUILDING MUSEUM FAMILY FESTIVAL



Discover Engineering Family Day

SATURDAY, FEBRUARY 17, 2007 / 10:00 AM-4:30 PM
NATIONAL BUILDING MUSEUM

RAIN OR SHINE!

Discover Engineering Family Day

SATURDAY, FEBRUARY 17, 2007 / 10:00 AM-4:30 PM
NATIONAL BUILDING MUSEUM RAIN OR SHINE

The National Building Museum and the National Engineers Week Foundation welcome families, scout groups, and all curious visitors to this exciting engineering festival to kick-off and celebrate National Engineers Week. Discover how engineers make a world of difference in the world around us. Throughout the day, children and adults can:

- **Build a dam** or a scale-model railroad bridge to see how much weight it will hold
- Make "**slime**" with chemical engineers
- Discover what makes something "**flink**," neither float nor sink
- Check out an unmanned **aerial vehicle** used for space
- Create foam plate **gliders** and paper **helicopters**
- Try **math puzzles**
- Watch student-designed **robots** compete
- Build **cantilevers** from drinking straws
- Solve all kinds of design and engineering challenges
- Try much, much more!

Free. \$5 donation suggested. Most appropriate for ages 5-13. Drop-in program. Scout groups should register via email at family@nbm.org

PHOTO: A NASA spacesuit from a space suit, photo by EE Eng.



NATIONAL BUILDING MUSEUM
401 F Street NW Washington, DC 20001
202.272.2448 / www.nbm.org
Red Line Metro, Judiciary Square



Meet and have your Polaroid picture taken with *Digit* from the PBS series *Cyberchase*. Participate in hands-on design and engineering activities drawn from the new PBS series *Design Squad*, premiering during Engineers Week February 18-24, 2007.



Major funding for the *Discover Engineering Family Day* is provided by the National Engineers Week Foundation and IEEE-USA. Local support is provided by the Navy Nuclear Propulsion Program, and American Society of Heating, Refrigerating and Air-conditioning Engineers Nation's Capital Chapter.

BRIDGING COMMUNITIES



Plan to attend the European Forum, the first ever conference on Sustainable Engineering on March 19-21, 2007 at the Brussels Expo in Brussels, Belgium.

The conference will examine the role of engineering and science in ensuring sustainable economic growth and quality of life around the world, and explore technologies that represent the best practices in water management, energy production, fuel consumption, recycling, and air pollution control.

More than 30 presentations, panel discussions, and speeches will comprise the program of the ASME European Forum on Sustainable Engineering, which will cover a broad range of topics, from greenhouse gases and alternative fuels to life-cycle assessment and “green manufacturing.”

Registration is ongoing. For more information on the European Forum, visit:
www.asme.org/europeanforum



Advancing Your Career

The ASME Professional Practice Curriculum (PPC) is an online resource designed to help you advance in the engineering profession by providing guidance and resources on subjects that complement an engineers technical skills.

The PPC consists of 42 modules on topics ranging from product development and writing cost proposals to team building and negotiation. The PPC also provides information on alternative engineering career paths such as patent law, marketing and sales, and entrepreneurship.

Currently, the 5 modules in the Career Transition Series are free of charge. ASME members additionally have access to the following 4 modules through the [Members Only](#) website:

- Introduction to Intellectual Property (Business & Legal Series)
- Leadership Styles and Attributes (Management & Leadership Series)
- Effective Technical Presentations (Communications Series)
- Product Management (Product Management Series)

To get started, please visit
www.professionalpractice.asme.org.

You can advertise in this newsletter!

one time/alternate months/every issue*

Full page	-	\$400/\$1500/\$2700
Half page	-	\$250/\$1000/\$1800
Quarter page	-	\$150/\$500/\$900
Business-Card size	-	\$85/\$275/\$500

**50% discount on 'New Position Open' ads*