

# Washington DC Section

## Newsletter

### December 2007



**Editor:** Geoffrey Smith  
202-404-6324  
geoffrey.smith@nrl.navy.mil

<http://www.isr.umd.edu/~jwh2/asme/>

**Executive Secretary:** Andrea Gironda  
703-489-9503  
agironda@verizon.net

<u>Chairman</u>	<u>Vice-Chairman</u>	<u>Treasurer</u>	<u>Secretary</u>	<u>Executive Advisor</u>
I. Eronini 443-885-3868 eronini@eng.morgan.edu	Rattan Tawney 301-228-8820 rtawney@bechtel.com	Boris Ciorneiu 703-541-2626 boris.ciorneiu@metris.com	Mohsen Mosleh 202-806-6622 mmosleh@howard.edu	Gurmukh D. Mehta 703-414-3882 gurmukh.d.mehta@saic.com

### Joint ASME Washington, DC and Baltimore Sections Event

#### **Intellectual Property: What Engineers and Engineering Managers need to know to protect their interests Thursday, January 17th**

**About the Program:** In this day and age, it is crucial that engineers and engineering managers have a general understanding of intellectual property law to properly protect their business. On the evening of January 17th, 2008, the Baltimore section of ASME will host a presentation by Royal W. Craig, Esq. and Jonathan M. Holda, Esq. of the Intellectual Property Practice Group of Ober|Kaler, a law firm with offices in Maryland, Virginia and Washington, D.C. Their presentation will examine fundamental issues of intellectual property law and intellectual property protection as they relate to engineering. Topics include Trademarks, Copyrights, Trade Secrets, and Patents. For more information on the event, please see the Baltimore Section Website <<http://sections.asme.org/baltimore/>> and the January Newsletter.

### MESSAGE FROM THE CHAIR

The November 15th Tour of Metris USA Inc., was most fascinating. ASME members were treated to live demonstrations of some of the non-contact metrology innovations of Metris, including the highly automated Metris Laser Radar and the Large-volume Tracking Metris IGPS. There was also an enlivening discussion of various applications of Metris products and Metris global operations... And the pizza was excellent and plentiful. Be sure to always check the newsletter for announcements of upcoming meetings.

#### **Area FIRST Robotics Teams Need You!**

FIRST (For Inspiration and Recognition of Science and Technology) teams in the Metropolitan Washington DC area are active and growing. In the District of Columbia alone, the number of high school teams has increased from just one a few years back, to six (B. Banneker Academic HS; T. Roosevelt Senior HS; F. Cardozo Senior HS; Mckinley Technology HS; Ballou Senior HS; Georgetown Day & Walt Whitman HS) in the competitions held early this year. There is a great need by FIRST teams in our area for mentors (yes, you), and I recommend to you, this very satisfying and rewarding volunteer opportunities in our K-12 education system.

#### **E-week 2008 and DC Metro Area Science & Engineering Fairs**

Family Day, Engineers Week 2008 is around the corner: Saturday, February 16, 2008 at the National Building Museum in Washington, DC, and we do not intend to miss the fun! Always a great event for families, youth groups, and visitors of various ages to meet engineers and learn about engineering and how engineering

~ continued on page 2 ~

#### **You can advertise in this newsletter!**

one time/alternate months/every issue\*

<b>Full page</b>	-	\$400/\$1500/\$2700
<b>Half page</b>	-	\$250/\$1000/\$1800
<b>Quarter page</b>	-	\$150/\$500/\$900
<b>Business-Card size</b>	-	\$85/\$275/\$500

\*50% discount on 'New Position Open' ads

~ Message from page 1 ~

ideas are realized, the DC section has reserved space, this time, for an expanded display. We welcome your finished ideas or demonstrations that can engage, thrill, and or provide hands-on experiences for 6-13 year olds or older. We especially seek industry and other sponsors who can provide give-away material for visitors to our display - items such as pens, key chains, fancy and informative brochures, try-at-home ideas/packages, etc. If you or your organization can assist us, please contact Tom Beutner (see Committees List, October newsletter) or any member of the executive committee.

ASME Washington DC Section would also support, again, five regional science and engineering fairs in the Metropolitan Washington DC Area through provision of judges and special awards of prizes and certificates. This is yet another great opportunity for you to contribute and participate in the local K-12 education community, and for area students to interact with practicing engineers. Members who would like to serve as special awards judges may contact the K-12 and College Relations committee lead, Rattan Tawney, the alternate lead, Mohsen Mosleh, or any member of the board. As before, we welcome corporate support for the awards and other recognition of the winning students. We commend and thank Metris USA, Inc. for stepping forward once more; and welcome and thank a new corporate sponsor: Vine Law Firm LLC. Bravo!

#### **ASME Washington DC Section Student Scholarship Fund**

The executive committee has approved the establishment of the ASME Washington DC Section Student Scholarship Fund, and the generous seeding of the Fund with about \$2,000 from the section reserves. This new endowment will serve to award financial scholarships exclusively to collegiate engineering students and pre-college students interested in a career in science and engineering. The initial goal is to grow the fund first to \$10,000, and then begin annual disbursements of 5% of the principal towards these scholarships, while continuing to grow the fund. The ultimate goal is to grow the fund to the level necessary to cover all the scholarships from fund earnings only. With the cost of college tuition increasing each

# LEARN MORE, EARN MORE IT'S THAT SIMPLE!

- Is your job market becoming saturated?
- Do you need a promotion or raise?
- Do you see career growth in what you are doing now?
- Are you the only engineer in your company without an advanced degree?
- Would you be marketable in a job search?

#### Program Options

Aerospace Engineering  
Chemical Engineering  
Civil & Environmental Engineering  
Electrical & Computer Engineering  
Energetic Concepts  
Environmental Engineering  
Fire Protection Engineering  
Materials Science & Engineering  
Mechanical Engineering  
Nuclear Engineering  
Project Management  
Reliability Engineering  
Software Engineering  
Systems Engineering

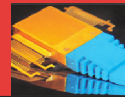
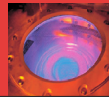
The A. James Clark School of Engineering is the highest-ranked engineering graduate school in the region and ranked No. 16 in the nation by *U.S. News & World Report*. With those credentials, it's the perfect choice for advancing your career and keeping you current with the latest technological developments in your field or in transferring to a new area of expertise.

Master of Engineering (30-credits)  
Graduate Certificate in Engineering (12-credits)  
Custom Short Courses, Workshops, License Reviews

Apply Today: No GRE EXAMS  
NO THESIS TO COMPLETE DEGREE  
NO QUALIFYING EXAMS  
CLASSES OFFERED TO ACCOMMODATE  
THE WORKING PROFESSIONAL

Contact Us: 301-405-0362, ENPM-C@UMD.EDU  
WWW.ENPM.EDU

Class Locations:  
College Park campus, remote sites in Maryland, On-Line,  
or ask us about classes at your workplace



A. JAMES CLARK  
SCHOOL OF ENGINEERING

OFFICE OF ADVANCED  
ENGINEERING EDUCATION

year by double-digit percentages, it is increasingly difficult for today's students to fund their education. Rigorous engineering programs require up to five years to complete, and thrust new graduates into five and six figure debts before they start their first job! The ASME Washington DC Section is determined to do whatever it can to help offset the financial burden on students. Every little bit helps, and we hope that over time, this endowment will reach such a level that we can truly make a difference in dozens of people's lives. Please help us aid tomorrow's engineers, and help these budding young innovators realize their dreams!

Please consider a contribution to the ASME Washington DC Section Student Scholarship Fund. Every dollar counts and is greatly appreciated. Our newsletters will be featuring a call for donations with relevant instructions for doing so.

Cheers,

Iheanyi Eronini

## Report and pictures from very successful Site View

On November 15, 2007 ASME Washington DC Section has visited Metris USA Inc. which designs, develops and markets a unique range of 3D hardware and software inspection systems servicing design and manufacturing industries. The company's reliable and innovative metrology solutions cover the full range of measurement volumes required by automotive and aerospace customers, in both fixed and portable configurations, and with optical and touch sensors.

A group of seven ASME members had taken a tour of Metris' Newington facilities experienced a live demonstration of Metris Laser Radar and Metris iGPS products capabilities.

The Metris Laser Radar provides a fully automated, non-contact measurement and inspection capability for large-volume applications of up to 60 meters and Metris iGPS. The Metris iGPS is a modular, large volume tracking system enabling factory-wide localization of multiple objects with metrology accuracy, applicable in manufacturing.

The program has continued with a presentation of the Metris USA, Inc products applications followed by questions and discussions over the presentation.

Finally, the tour has finished with a snack bar social event where Metris USA, Inc. has donated a check of \$ 500 dollars as sponsorship of the ASME Washington Science Fair Awards, 2008



## Made a Difference in Engineering Education?

Do you know an individual or entity (e.g. company, organization, institution, etc.) that has contributed to engineering education in a significant way? If so, consider nominating them for one of the following society awards:

The **Frank von Flue Award**, established in 2002, recognizes significant contributions by an individual or a group to the promotion of lifelong learning for mechanical engineers. Lifelong learning is defined as the continued process of education and/or professional development, following a post-secondary education degree, to maintain the competence and flexibility of mechanical engineers throughout their career. Contributions may include assessment, development, distribution or promotion of materials for lifelong learning via appropriate mechanisms, such as professional development or university extension courses and programmed or self-paced learning.

The **Ben C. Sparks Medal**, established in 1990, is presented annually to a mechanical engineer for recognition of eminent service to mechanical engineering technology education through contributions toward ASME; towards higher education professional service; and towards the teaching and/or research faculty roles in mechanical engineering and mechanical engineering technology. Candidates must have a record of outstanding performance in all of three areas: a broad range of contributions to ASME; dedicated efforts and a record of achievements in the advancement of engineering education and engineering technology education; and contributions, over an extended period of time, to the positive support, recognition, or interaction of mechanical engineering technology and mechanical engineering programs, their faculties, or students.

The deadline for submitting nominations is Jan. 1, 2008. For more information and a nomination package, please visit: <http://www.asme.org/Governance/Honors/SocietyAwards/>

### ASME ACCEPTING APPLICATIONS FOR 2008-09 FEDERAL GOVERNMENT FELLOWSHIPS

ASME is currently accepting applications for the following Federal Government Fellowship positions:

#### Congressional Fellowships

ASME is accepting applications from qualified candidates interested in serving as a 2008-09 Congressional Fellow. The Federal Fellows program enables selected ASME members to spend one year in Washington, D.C. working with the staff of a congressional committee, U.S. senator or U.S. Representative. Federal Government Fellowships provide a valuable public service to the nation while providing engineers with a unique opportunity to participate directly in the policy making process. Congressional Fellows may serve from September 2008 through August 2009 - or January 2009 through December 2009 - at their option. The deadline to submit an application for the Congressional Fellowship is April 1, 2008.

#### Department of Commerce Fellowship

ASME is also accepting applications from qualified candidates interested in serving a year at the U.S. Department of Commerce in the Manufacturing and Services (MAS) Office of Standards Liaison (OSL). The Fellow will work with U.S. stakeholders involved in the standardization process, including individual companies, industry associations, standards developing organizations, and the American National Standards Institute on trade-related standards issues affecting U.S. competitiveness, innovation and growth. OSL works on issues involving all sectors and in all overseas markets, although there is a greater focus on emerging and technology-related sectors and critical markets such as Europe and China. Applicants for this position must have strong technical, interpersonal, organizational, and oral and written communication skills, as well as substantive knowledge or experience in an industry sector and the standardization process. The start date for the DOC fellowship is flexible.

A stipend of \$55,000 will be awarded to each Fellow for the year. All Fellowship applicants must be a U.S. citizen and an ASME member at the time of application. The following credentials are encouraged: At least five years of professional experience, an advanced engineering degree, professional engineer registration, and some public policy experience. An online application is available at <https://secure.asme.org/fedgovfellows/appform.cfm>

For additional information about the Federal Fellows program, visit [http://www.asme.org/NewsPublicPolicy/GovRelations/Programs/Federal\\_Government.cfm](http://www.asme.org/NewsPublicPolicy/GovRelations/Programs/Federal_Government.cfm) or contact Kathryn Holmes, director, ASME Government Relations, at [holmesk@asme.org](mailto:holmesk@asme.org) or 202/785-7390.

-----  
**DONATE TO ASME WASHINGTON DC SECTION STUDENT SCHOLARSHIP FUND**

Please make checks payable to: ASME DC Scholarship Fund

**Mail checks to:**                    **Boris Ciorneiu**  
   **ASME DC Section Treasurer**  
   **20069 Great Falls Forrest Drive**  
   **Great Falls, Virginia 22066**

Please detach and include with your donation

Name/Organization \_\_\_\_\_

If organization, Responsible Officer \_\_\_\_\_

Address \_\_\_\_\_  
\_\_\_\_\_

Phone \_\_\_\_\_

Thank you for your generous contribution of:

\_\_\_\_ \$100 \_\_\_\_ \$500 \_\_\_\_ \$1000 \_\_\_\_ Other \_\_\_\_\_

