



Washington DC Section

Newsletter April 2007



Editor: Geoffrey Smith
202-404-6324
geoffrey.smith@nrl.navy.mil

<http://www.isr.umd.edu/~jwh2/asme/>

Executive Secretary: Andrea Gironda
703-489-9503
agironda12@comcast.net

Chairman	Vice-Chairman	Treasurer	Secretary	Executive Advisor
I. Eronini 443-885-3868 eronini@eng.morgan.edu	Rattan Tawney 301-228-8820 rtawney@bechtel.com	Charles Akula 301-228-7278 cakula@bechtel.com	Mohsen Mosleh 202-806-6622 mmosleh@howard.edu	Gurmukh D. Mehta 703-414-3882 gurmukh.d.mehta@saic.com

ASME Washington DC Section **Awards Banquet** **May 02, 2007**

Date: Wednesday, May 02, 2007

Time: 6:30 pm - Cash Bar
7:00 pm - Dinner

8:00 pm - Honors and Awards

Place: Mykonos Grill, 121 Congressional Lane
Rockville, Maryland 0852-1542

Cost: \$25 per person

RSVP: For reservations, contact ASME Washington DC Section Executive Secretary, Andrea Gironda, by Phone: (703) 489-9503 or Email: agironda12@comcast.net by **April 27, 2007**. Note: Space is limited so reserve early!

Menu: Hors d'oeuvres and salad,
Dinner - your choice of Oven Roasted Leg of Lamb; Shrimp and Chicken Kebab; Fresh Fillet of Salmon; Combination Platter; and Vegetarian Platter
Dessert, and Coffee (Regular or Decaffeinated)

Program: The awards banquet will
1. Recognize the following ASME Washington DC Section members who achieved 50 and 75 years Membership during the 2005-2006 Membership year:

- Stanley Alper
- Orron E. Kee
- Ali Kiper
- Milton J. Reuwer
- John B. Toomey
- Benjamin F. Willis
- William D. Price (75 years Membership)

~ continued on page 3 ~

Regional Engineering and Science Fair Event, 2007

The High and Middle schools in various regional counties held the Engineering and Science Fair event on March 17 and 24 this year. ASME Washington DC Section participated in engineering category at five regional counties: Fairfax, Washington DC, Northern Virginia (Arlington), Montgomery, and Prince George. We received overwhelming responses from the local members to volunteer as judges for the young student's exhibits and projects with innovative ideas. We had three to four judges at each county fair. Our judges were impressed with the talent and creativity of Middle and High school students. Their projects showed the excellent examples of young students' research work and skills. One of the observations from the judges was increasing numbers of female students in the engineering field. We would like to thank all judges for their efforts and valuable time to participate in this fun event. We have three cash prizes for the 1st, 2nd, and 3rd place winners. In addition to cash prizes, the certificates and letters were also issued to the winners. We plan to honor and recognize the 1st and 2nd place winners at an award banquet meeting on May 2.

Vote! Vote! Vote!

It is again time to choose your Officers and Directors. Each Officer or Director is elected to a two year term, with half up for election each year. Please fill out and return the ballot found at the back of this newsletter.

Thank You!

MARK YOUR CALENDARS!

ASME 2007 Early Career Forums & Fairs

Don't miss the opportunity to network with peers and get practical advice and information on issues relevant to your developing engineering career.

These events consisting of career fairs and panel discussions from successful industry experts and senior-level engineers will increase your awareness of trends and career opportunities in the engineering profession.

Career Fairs will feature companies hiring engineers and other opportunities. Get more information about the Forums & Fairs and important information for US Citizens traveling to Canada in 2007 visit:

http://www.asme.org/Communities/EarlyCareer/Forum/Upcoming_Events.cfm

Montreal, Canada - May 13, 2007 (At ASME Turbo Expo)

Toronto, Canada - June 10, 2007 (At ASME Summer Annual Meeting)

Seattle, Washington - November 11, 2007 (At ASME International Mechanical Engineering Congress & Exposition)

LEARN MORE, EARN MORE IT'S THAT SIMPLE!

- Is your job market becoming saturated?
- Do you need a promotion or raise?
- Do you see career growth in what you are doing now?
- Are you the only engineer in your company without an advanced degree?
- Would you be marketable in a job search?

Program Options

Aerospace Engineering
Chemical Engineering
Civil & Environmental Engineering
Electrical & Computer Engineering
Energetic Concepts
Environmental Engineering
Fire Protection Engineering
Materials Science & Engineering
Mechanical Engineering
Nuclear Engineering
Project Management
Reliability Engineering
Software Engineering
Systems Engineering

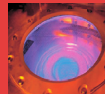
The A. James Clark School of Engineering is the highest-ranked engineering graduate school in the region and ranked No. 16 in the nation by *U.S. News & World Report*. With those credentials, it's the perfect choice for advancing your career and keeping you current with the latest technological developments in your field or in transferring to a new area of expertise.

Master of Engineering (30-credits)
Graduate Certificate in Engineering (12-credits)
Custom Short Courses, Workshops, License Reviews

Apply Today: NO GRE EXAMS
NO THESIS TO COMPLETE DEGREE
NO QUALIFYING EXAMS
CLASSES OFFERED TO ACCOMMODATE
THE WORKING PROFESSIONAL

Contact Us: 301-405-0362, ENPM-C@UMD.EDU
WWW.ENPM.EDU

Class Locations:
College Park campus, remote sites in Maryland, On-Line,
or ask us about classes at your workplace



A. JAMES CLARK
SCHOOL OF ENGINEERING

OFFICE OF ADVANCED
ENGINEERING EDUCATION

The Fellow Grade recognizes significant engineering achievements and contributions to the engineering profession. ASME takes great pride in its Fellows Program and encourages the nomination of ASME members to Fellow Grade. Any ASME member can submit a nomination for Fellow.

For additional information on ASME's **Fellows Program** visit:

<http://www.asme.org/Governance/Honors/Fellows/Fellows.cfm>

ASME To Hold Three Industry-Focused Conferences on Biotechnology

Leaders in the science and engineering communities will assess the latest technology in bioprocess engineering, biomechanics and medical devices and instrumentation at three ASME conferences in June 2007.

The ASME Bioprocess Technology Seminars and Exhibits will be held June 4-6, 2007, at the Radisson-Dublin St. Helens Hotel in Dublin Ireland. The second conference, Frontiers in Biomedical Devices 2007, is scheduled for June 7-8, at the Hyatt Regency Irvine in Irvine, Calif. The 2007 Summer Bioengineering Conference will take place June 20-24, at the Keystone Resort and Conference Center in Keystone, Colo.

The three conferences will examine the progress and future directions in biotechnology research, and provide practitioners with the latest tools and training to advance commercial applications in the field. ASME's objective in presenting the conferences is to provide the fast-growing biopharmaceutical industry with useful resources to solve technology challenges.

For more information, visit: http://www.asme.org/Communities/Technical/BPE/Bioprocess_Activities.cfm

~ Awards Dinner continued from page 1 ~

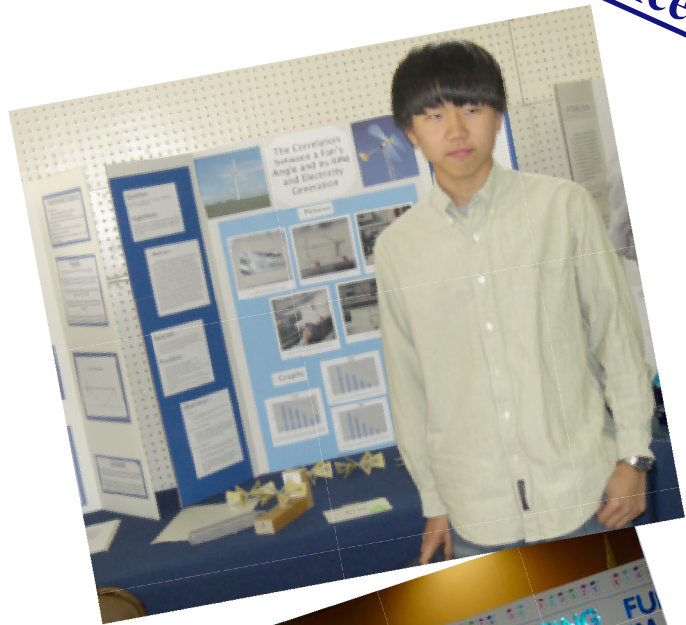
2. Recognize and present awards to first- and second-place finishers, in the Engineering Category, judged by ASME Washington DC Section in the 2007 Regional Science Fairs of District of Columbia, Fairfax County, Montgomery County, Northern Virginia, and Prince George's Area.

3. Recognize and present awards to the 2007 ASME Washington DC Section Scholarship recipients. These are selected undergraduate students majoring in Mechanical Engineering at these area universities: GWU, Howard, CUA, UMD, and UDC

Directions: Congressional Lane is off of Rockville Pike. Driving directions can be found at: <http://www.mykonosgrill.com/CONTACT.asp>. Free parking with no time limit is available around the restaurant in Congressional Plaza as well as in covered parking area of the restaurant building.

ASME Washington DC Section is grateful to our sponsors: Metris USA (Science Fairs), and ASME Ex-Region III (Scholarships)

Pictures from the Science Fair!



You can advertise in this newsletter!

one time/alternate months/every issue*

Full page	-	\$400/\$1500/\$2700
Half page	-	\$250/\$1000/\$1800
Quarter page	-	\$150/\$500/\$900
Business-Card size	-	\$85/\$275/\$500

**50% discount on 'New Position Open' ads*

Ballot for Selection of ASME Washington DC Section Executive Committee

Each of your Directors and Officers are elected to serve two year terms, with half elected every year. The slate for this year put forth by the Nominating Committee is listed below. Please indicate your selections, noting that write-ins are welcome. You may vote for some or all the nominees, but only for a maximum of 5 candidates. Once your ballot is complete please either print and mail a hard copy, or submit by email with all information to the Executive Secretary:

Andrea Girona
4909 Sunflower Drive
Rockville, MD 20853

agironda12@comcast.net

Note that voting closes May 15th, 2007

ASME Member Name: _____

ASME Member Number: _____

Yes
no

All of the Below

Directors

Robert Hershey, Ph.D (returning Director).

Thomas Beutner (returning Director)

M.A.Siddiq Qidwai, Ph.D.

Rafael Mandujano

Howard Berkof

_____(write-in)

Note: Statements from the new candidates may be found on the following page

Statements from New Director-Candidates

M.A.Siddiq Qidwai

“I have been a member of ASME from 1997 when I joined in as a student member. I have benefited tremendously from the many excellent services offered by the society. I believe that it is my turn now to serve the society and its diligent members. Being a director of the Executive Committee of Washington DC section of ASME will certainly afford me that opportunity.”

Dr. M. A. Siddiq Qidwai is a mechanical engineer associated with Science Applications International Corporation (SAIC) and is part of the team situated at the Multifunctional Materials Branch (Code 6350) of the Naval Research Laboratory in Washington, DC. His recent research projects include implementation of single crystal plasticity in image-based design analysis of advanced naval materials, numerical modeling of piezoelectric constitutive behavior, design and analysis of a new class of tiled polymer composites, and design of multifunctional structure-battery components for UUVs. His previous research concentrated on developing rules and computational tools for multifunctional material systems, and computational modeling of smart materials focusing on shape memory alloys for which he is widely acknowledged. Dr. Qidwai has two patents pending, and is author or co-author on more than fifty papers including fifteen archival journal papers.

PhD and MS in Aerospace Engineering from TX A&M University in 1999 and 1995
BS in Mechanical Engineering from Middle East Technical University (Ankara, Turkey) in 1993

Howard Berkof

My interest in joining the ASME Washington DC Executive Board is to help in the recruitment and retention of new members and volunteers and develop programming attractive to the entire membership. The next generation of ASME leadership are today's early career engineers and students and I bring to the table exciting ideas and experience in creating attractive programming targeted at this category of members. I also bring significant experience in section operations, having served as Chair for the South-eastern Michigan Section and Newsletter editor for both the Southeastern Michigan Section and Rochester Section. As President of the Penn State Student Chapter, I led an organization of 250 student members and 15 officers, conducting weekly programming activities.

BS (ME) from Pennsylvania State University in June 2000
MBA from Harvard Business School in June 2007

Rafael Mandujano

Project Engineer for the Unmanned Maritime Vehicles Program Office for the Navy where he manages sonar development for unmanned undersea vehicle programs and coordinates technology development. Prior to coming to DC, he worked as a mechanical engineer for the Naval Undersea Warfare Center in Newport, RI.

B.S. in Mechanical Engineering from the Massachusetts Institute of Technology